

General Description

FUEL INJECTION (FUEL SYSTEMS)

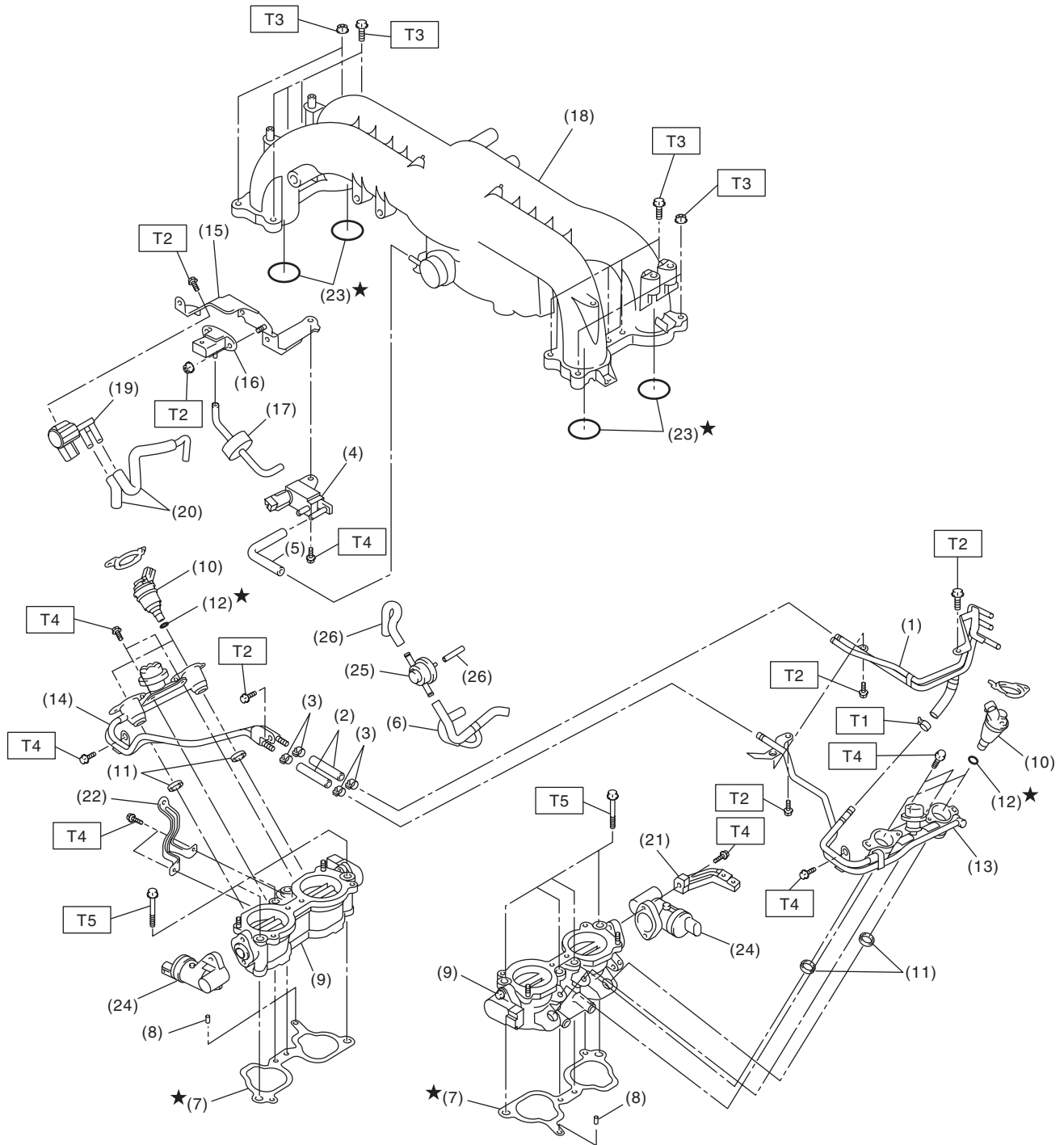
1. General Description

A: SPECIFICATION

Fuel tank	Capacity	64 ℓ (16.9 US gal, 14.1 Imp gal)
	Location	Under rear seat
Fuel pump	Type	Impeller
	Shutoff discharge pressure	550 — 850 kPa (5.61 — 8.67 kg/cm ² , 79.8 — 123.3 psi)
	Discharge rate	155 ℓ (40.9 US gal, 34.1 Imp gal)/h or more. [12 V at 300 kPa (3.06 kg/cm ² , 43.5 psi)]
Fuel filter		In-tank type

B: COMPONENT

1. INTAKE MANIFOLD



FU-02338

General Description

FUEL INJECTION (FUEL SYSTEMS)

(1) Fuel pipe ASSY	(13) Fuel injector pipe LH	(23) O-ring
(2) Fuel hose	(14) Fuel injector pipe RH	(24) Tumble generator valve actuator
(3) Clip	(15) Solenoid valve bracket	(25) Purge valve
(4) Purge control solenoid valve	(16) Manifold absolute pressure sensor	(26) Purge hose
(5) Vacuum hose	(17) Filter	
(6) Vacuum control hose	(18) Intake manifold	
(7) Intake manifold gasket	(19) Wastegate control solenoid valve ASSY	
(8) Guide pin	(20) Vacuum hose	
(9) Intake manifold (lower)	(21) Ground stay	
(10) Fuel injector	(22) Coolant filler tank stay	
(11) Seal ring		
(12) O-ring		

Tightening torque: N·m (kgf·m, ft·lb)

T1: 1.5 (0.15, 1.1)

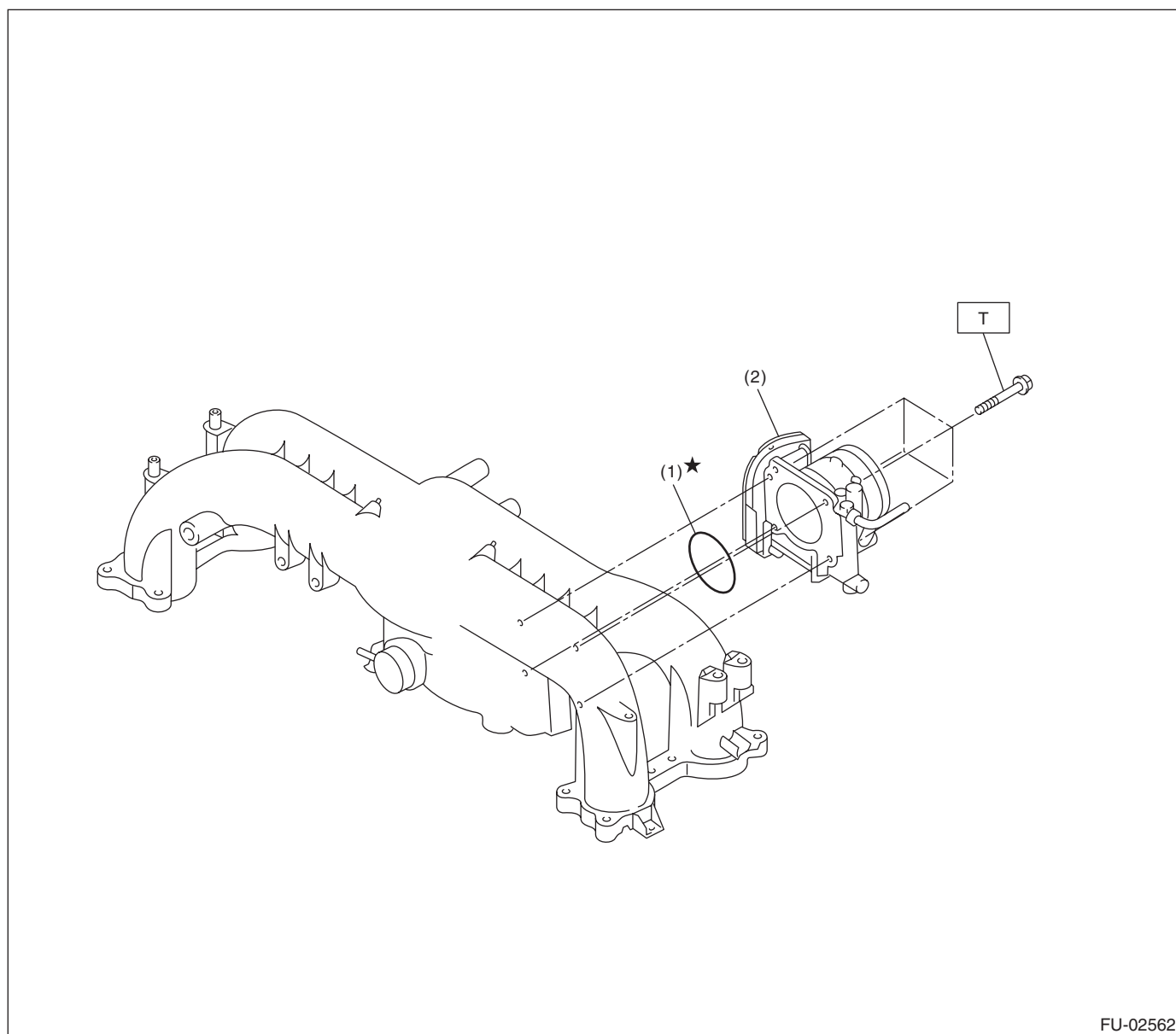
T2: 6.5 (0.66, 4.8)

T3: 8.3 (0.85, 6.1)

T4: 19 (1.94, 14)

T5: 25 (2.5, 18)

2. AIR INTAKE SYSTEM



FU-02562

(1) O-ring

(2) Throttle body

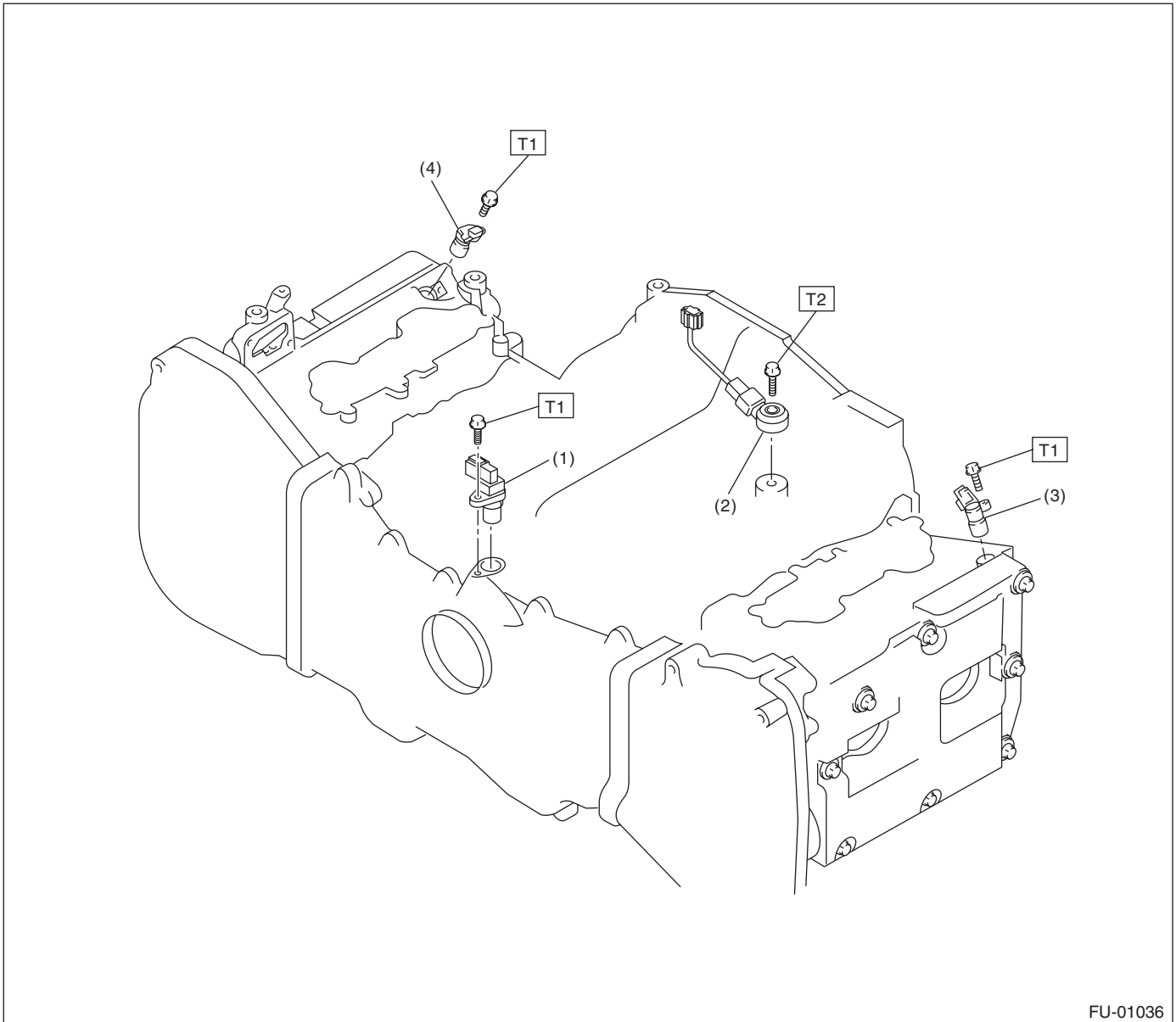
Tightening torque: N·m (kgf·m, ft·lb)

T: 8 (0.8, 5.9)

General Description

FUEL INJECTION (FUEL SYSTEMS)

3. CRANKSHAFT POSITION, CAMSHAFT POSITION AND KNOCK SENSORS



FU-01036

- (1) Crankshaft position sensor
- (2) Knock sensor

- (3) Camshaft position sensor LH
- (4) Camshaft position sensor RH

Tightening torque: N·m (kgf·m, ft·lb)

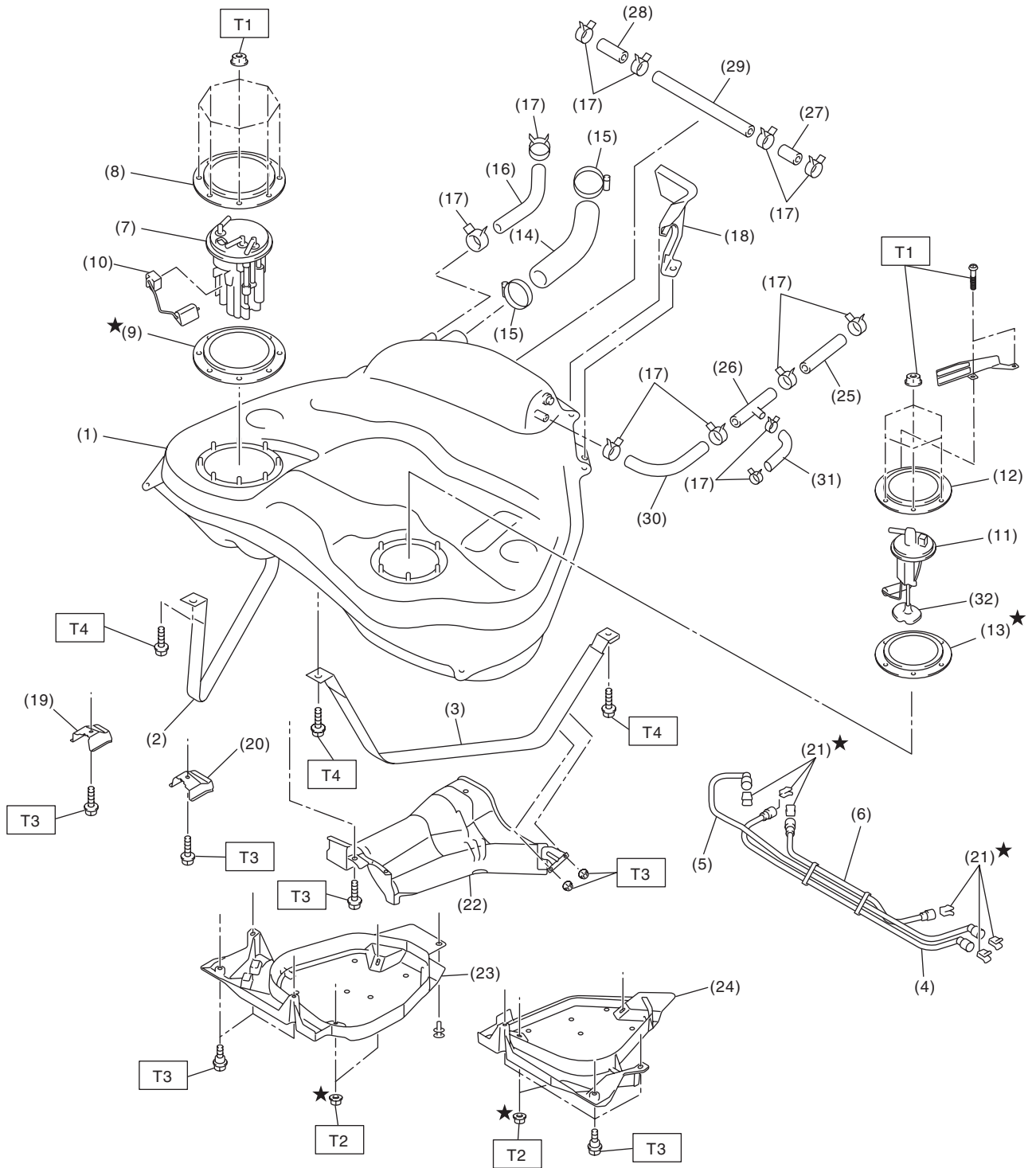
T1: 6.4 (0.65, 4.7)

T2: 24 (2.4, 17.4)

General Description

FUEL INJECTION (FUEL SYSTEMS)

4. FUEL TANK



FU-02861

General Description

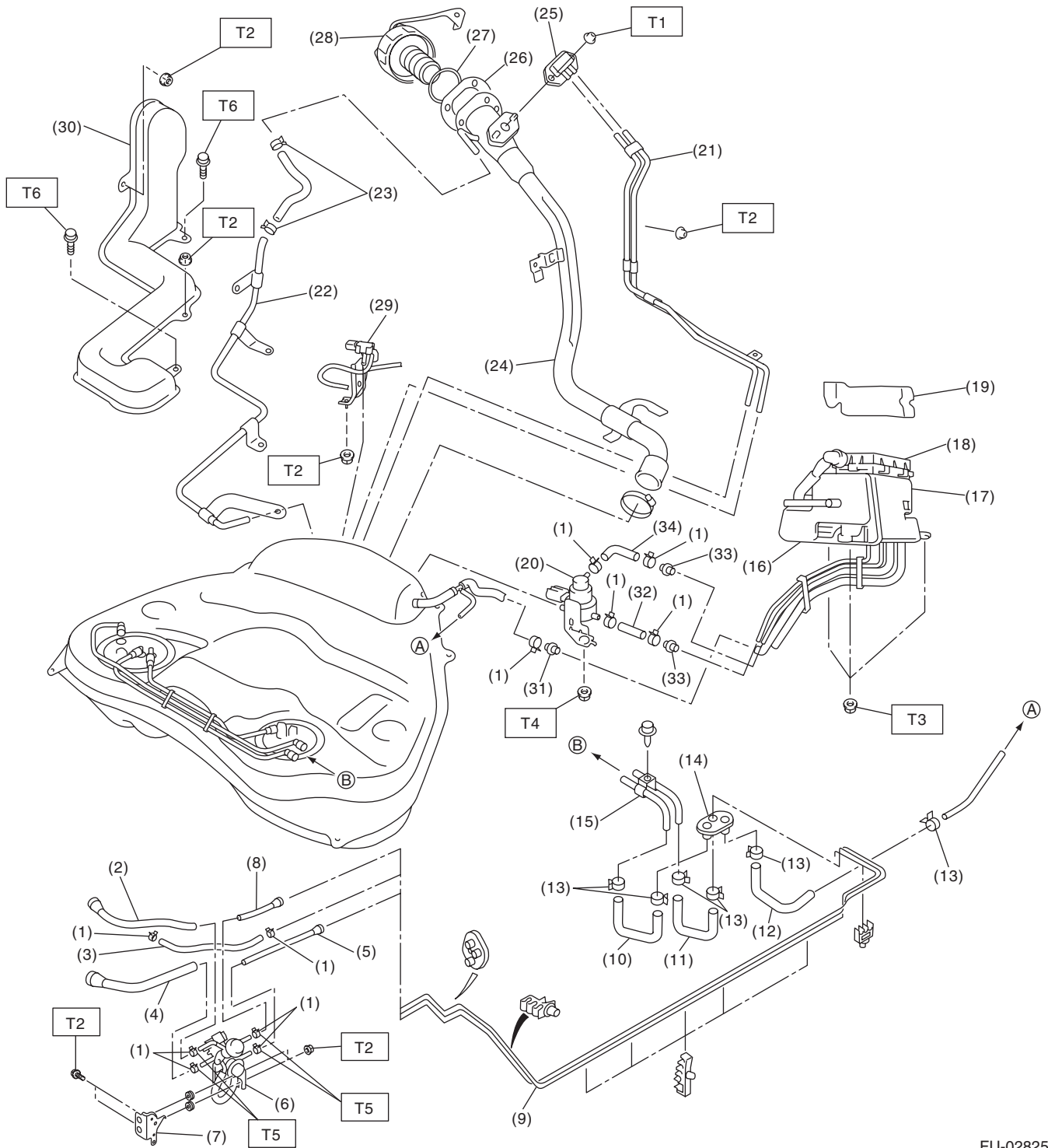
FUEL INJECTION (FUEL SYSTEMS)

(1) Fuel tank	(14) Fuel filler hose	(27) Evaporation hose C
(2) Fuel tank band RH	(15) Clamp	(28) Evaporation hose D
(3) Fuel tank band LH	(16) Evaporation hose A	(29) Evaporation pipe
(4) Delivery tube	(17) Clip	(30) Evaporation hose E
(5) Return tube	(18) Fuel tank protector LH (Rear)	(31) Evaporation hose F
(6) Jet pump tube	(19) Stopper RH	(32) Fuel sub level sensor filter
(7) Fuel pump ASSY	(20) Stopper LH	(33) Fuel sub level sensor protector
(8) Fuel pump upper plate	(21) Retainer	
(9) Fuel pump gasket	(22) Heat shield cover	
(10) Fuel level sensor	(23) Fuel tank protector RH (Front)	<i>Tightening torque: N·m (kgf-m, ft-lb)</i>
(11) Fuel sub level sensor	(24) Fuel tank protector LH (Front)	<i>T1: 4.4 (0.45, 3.2)</i>
(12) Fuel sub level sensor upper plate	(25) Evaporation hose B	<i>T2: 9 (0.9, 6.6)</i>
(13) Fuel sub level sensor gasket	(26) Connector	<i>T3: 17.5 (1.78, 12.9)</i>
		<i>T4: 33 (3.4, 25)</i>

General Description

FUEL INJECTION (FUEL SYSTEMS)

5. FUEL LINE



FU-02825

General Description

FUEL INJECTION (FUEL SYSTEMS)

(1) Clamp	(15) Fuel pipe ASSY	(29) Fuel tank pressure sensor
(2) Fuel delivery hose A	(16) Canister	(30) Evaporation pipe protector
(3) Evaporation hose	(17) Drain valve	(31) Connector A
(4) Fuel return hose A	(18) Drain filter	(32) Canister hose A
(5) Fuel return hose B	(19) Canister protector	(33) Connector B
(6) Fuel by-pass valve	(20) Pressure control solenoid valve	(34) Canister hose B
(7) Fuel by-pass valve bracket	(21) Evaporation pipe (A)	
(8) Fuel delivery hose B	(22) Evaporation pipe (B)	
(9) Fuel pipe ASSY	(23) Clip	
(10) Fuel delivery hose C	(24) Fuel filler pipe	
(11) Fuel return hose C	(25) Shut valve	
(12) Evaporation hose B	(26) Gasket	
(13) Clamp	(27) Filler ring	
(14) Grommet	(28) Fuel filler cap	

Tightening torque: N-m (kgf-m, ft-lb)

T1: 4.4 (0.45, 3.2)

T2: 7.5 (0.76, 5.5)

T3: 8 (0.8, 5.9)

T4: 17.6 (1.8, 13)

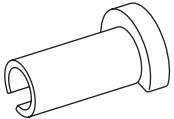
T5: 1.25 (0.13, 0.94)

T6: 1.0 (0.1, 0.7)

C: CAUTION

- Wear appropriate work clothing, including a cap, protective goggles and protective shoes when performing any work.
- Remove contamination including dirt and corrosion before removal, installation or disassembly.
- Keep the disassembled parts in order and protect them from dust and dirt.
- Before removal, installation or disassembly, be sure to clarify the failure. Avoid unnecessary removal, installation, disassembly and replacement.
- Vehicle components are extremely hot after driving. Be wary of receiving burns from heated parts.
- Be sure to tighten fasteners including bolts and nuts to the specified torque.
- Place shop jacks or rigid racks at the specified points.
- Before disconnecting connectors of sensors or units, be sure to disconnect the ground cable from battery.
- Place "NO FIRE" signs near the working area.
- Be careful not to spill fuel.

D: PREPARATION TOOL

ILLUSTRATION	TOOL NUMBER	DESCRIPTION	REMARKS
 <p>ST42099AE000</p>	42099AE000	CONNECTOR REMOVER	Used for disconnecting quick connector of the engine compartment.