

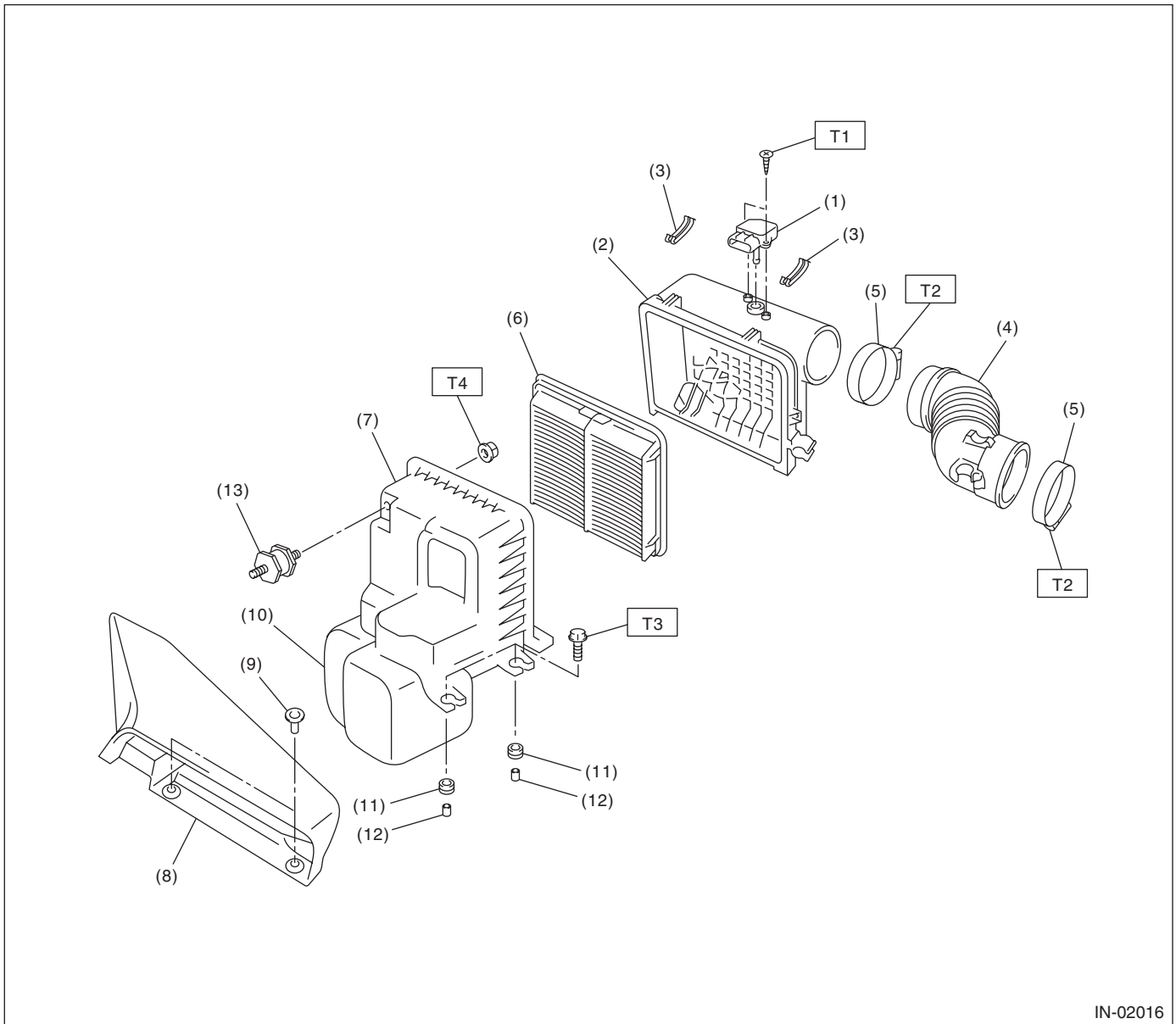
# General Description

INTAKE (INDUCTION)

## 1. General Description

### A: COMPONENT

#### 1. AIR CLEANER



IN-02016

- |   |                              |
|---|------------------------------|
| (1) Mass air flow and intake air temperature sensor | (7) Air cleaner case (front) |
| (2) Air cleaner case (rear)                         | (8) Air intake duct          |
| (3) Clip  | (9) Clip                     |
| (4) Air intake boot                                 | (10) Resonator chamber       |
| (5) Clamp   | (11) Cushion                 |
| (6) Air cleaner element                             | (12) Spacer                  |
|   | (13) Cushion                 |

**Tightening torque: N-m (kgf-m, ft-lb)**

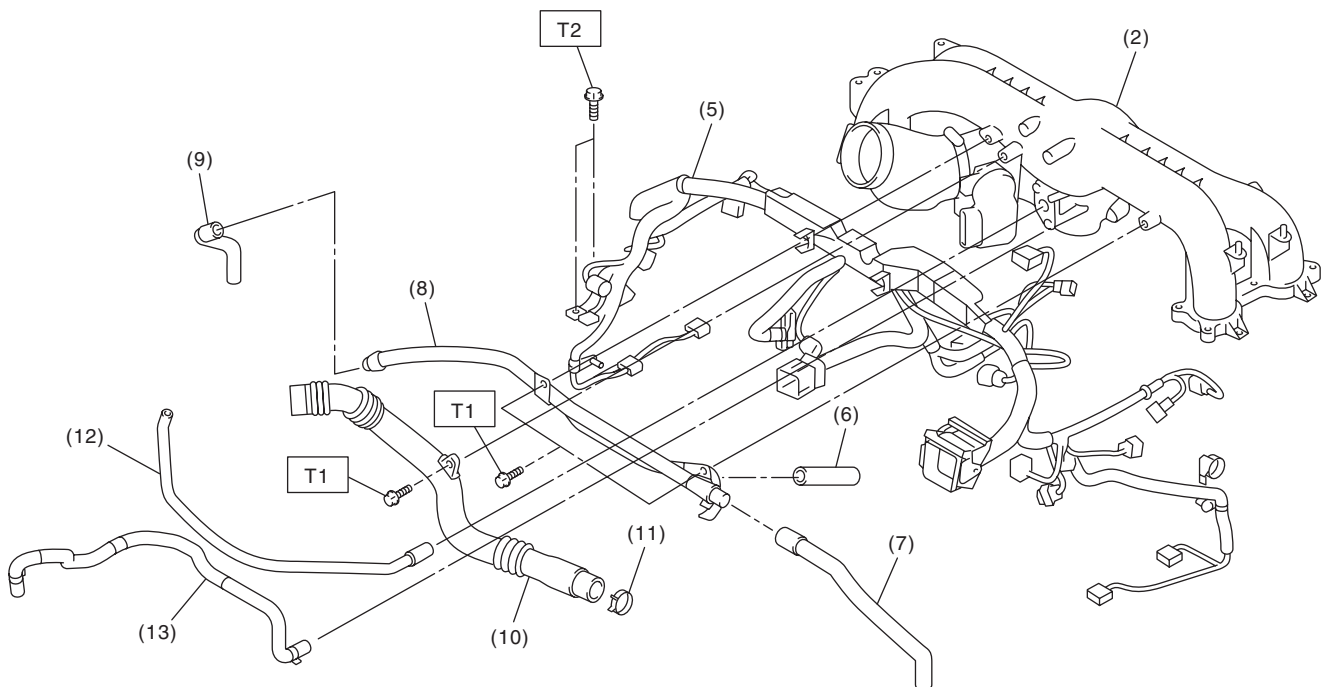
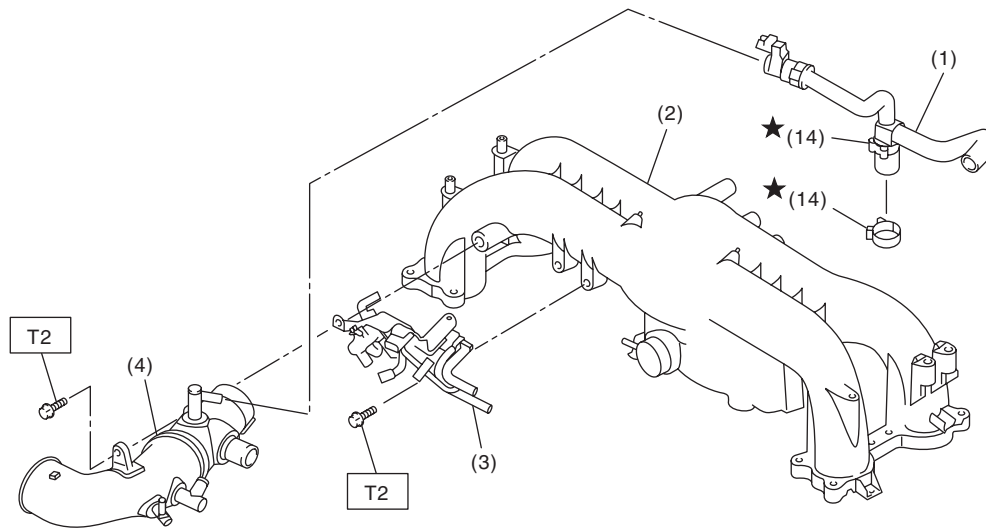
**T1: 1.0 (0.10, 0.74)**

**T2: 2.5 (0.25, 1.8)**

**T3: 6.0 (0.61, 4.4)**

**T4: 7.5 (0.76, 5.5)**

## 2. INTAKE DUCT



IN-02092

- |                                 |                       |                         |
|---------------------------------|-----------------------|-------------------------|
| (1) PCV hose ASSY               | (7) Vacuum hose       | (13) Brake booster hose |
| (2) Intake manifold             | (8) PCV pipe          | (14) Clamp              |
| (3) Solenoid valve bracket ASSY | (9) Vacuum hose       |                         |
| (4) Intake duct                 | (10) Air by-pass pipe |                         |
| (5) Engine harness ASSY         | (11) Clamp            |                         |
| (6) Vacuum hose                 | (12) Vacuum hose      |                         |

**Tightening torque: N·m (kgf·m, ft·lb)**

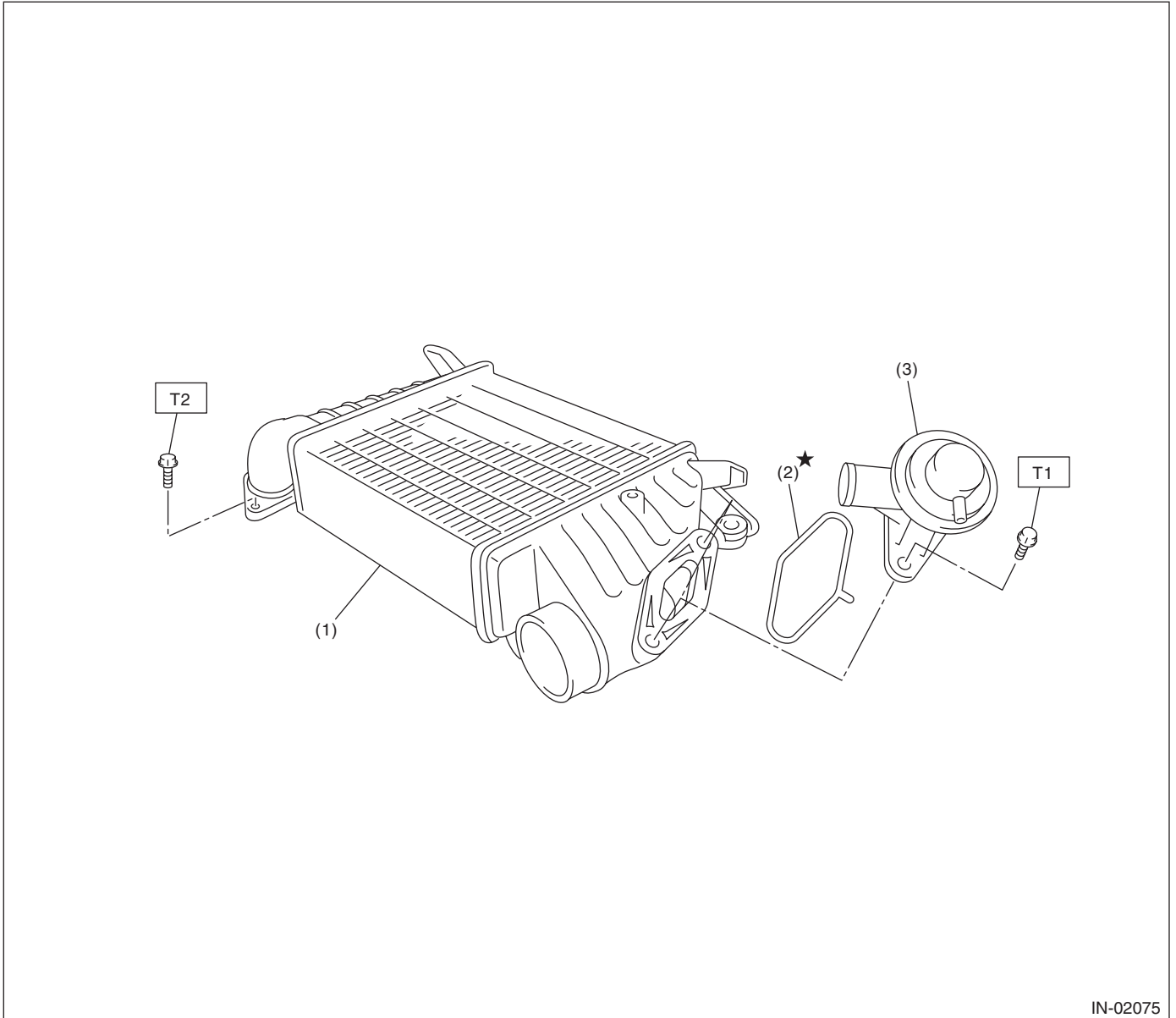
**T1: 6.5 (0.66, 4.8)**

**T2: 19 (1.9, 13.7)**

# General Description

INTAKE (INDUCTION)

## 3. INTERCOOLER



IN-02075

(1) Intercooler  
(2) Gasket

(3) Air by-pass valve

**Tightening torque: N·m (kgf·m, ft·lb)**

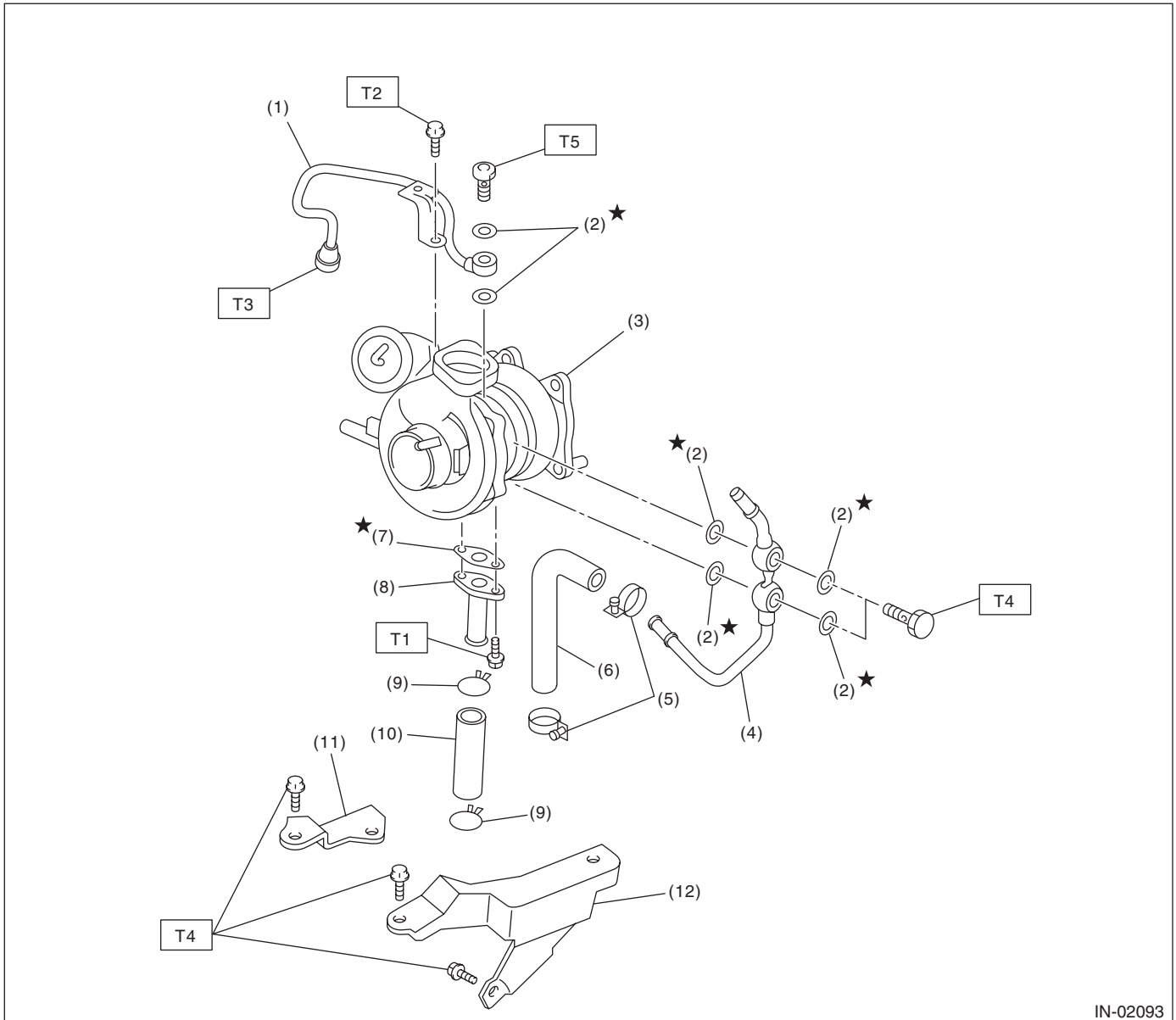
**T1: 6.5 (0.66, 4.8)**

**T2: 16 (1.6, 11.6)**

# General Description

INTAKE (INDUCTION)

## 4. TURBOCHARGER



IN-02093

- |                         |                              |
|-------------------------|------------------------------|
| (1) Oil inlet pipe      | (7) Gasket                   |
| (2) Metal gasket        | (8) Oil outlet pipe          |
| (3) Turbocharger        | (9) Clip                     |
| (4) Water pipe          | (10) Oil outlet hose         |
| (5) Clamp               | (11) Turbocharger bracket RH |
| (6) Engine coolant hose | (12) Turbocharger bracket LH |

**Tightening torque: N·m (kgf·m, ft·lb)**

**T1: 4.4 (0.45, 3.3)**

**T2: 4.9 (0.50, 3.6)**

**T3: 20 (2.0, 14.8)**

**T4: 33 (3.4, 24.6)**

**T5: 16 (1.6, 11.6)**

## General Description

### INTAKE (INDUCTION)

---

#### **B: CAUTION**

- Wear appropriate work clothing, including a cap, protective goggles and protective shoes when performing any work.
- Remove contamination including dirt and corrosion before removal, installation or disassembly.
- Keep the disassembled parts in order and protect them from dust and dirt.
- Before removal, installation or disassembly, be sure to clarify the failure. Avoid unnecessary removal, installation, disassembly and replacement.
- Vehicle components are extremely hot after driving. Be wary of receiving burns from heated parts.
- Be sure to tighten fasteners including bolts and nuts to the specified torque.
- Place shop jacks or rigid racks at the specified points.
- Before disconnecting connectors of sensors or units, be sure to disconnect the ground cable from battery.