

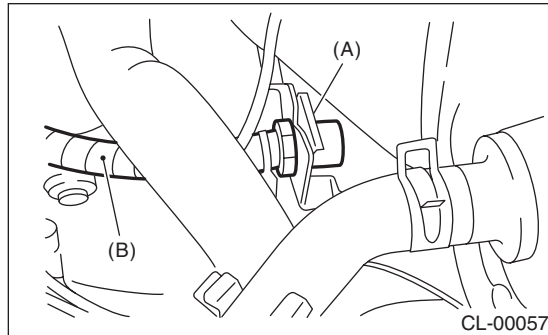
Clutch Pipe and Hose

CLUTCH SYSTEM

7. Clutch Pipe and Hose

A: REMOVAL

- 1) Remove the air intake chamber. (Non-turbo model) <Ref. to IN(H4SO)-7, REMOVAL, Air Intake Chamber.>
- 2) Remove the intercooler. (Turbo model) <Ref. to IN(H4DOTC)-12, REMOVAL, Intercooler.>
- 3) Drain the clutch fluid. <Ref. to CL-21, Clutch Fluid.>
- 4) Disconnect the clutch pipe from the clutch hose and master cylinder.
- 5) Pull out the clamp, then remove the clutch hose from the bracket.



- (A) Clamp
- (B) Clutch hose

- 6) Disconnect the hose from the operating cylinder.
- 7) Remove the bracket.

B: INSTALLATION

Install in the reverse order of removal.

NOTE:

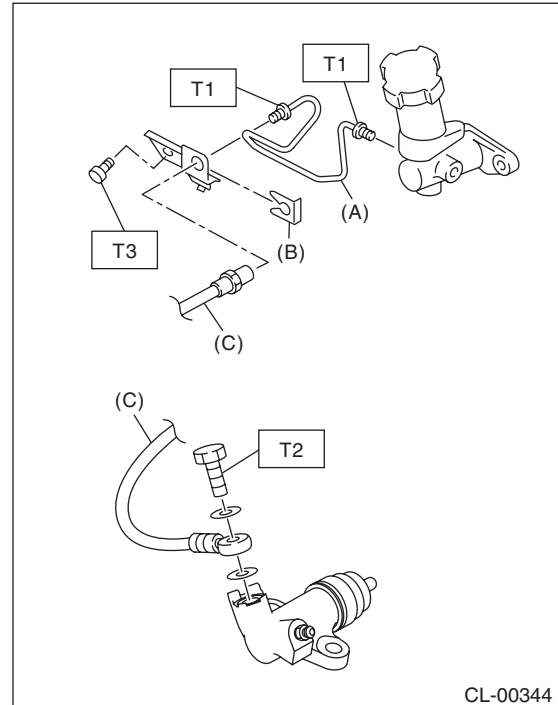
Bleed air from the clutch fluid. <Ref. to CL-22, Clutch Fluid Air Bleeding.>

Tightening torque:

T1: 15 N·m (1.5 kgf-m, 10.8 ft-lb)

T2: 18 N·m (1.8 kgf-m, 13.0 ft-lb)

T3: 25 N·m (2.5 kgf-m, 18.4 ft-lb)



- (A) Clutch pipe
- (B) Clip
- (C) Clutch hose

C: INSPECTION

Check pipes and hoses for cracks, breakage or damage. Check joints for fluid leakage. If any cracks, breakage, damage or leakage is found, repair or replace the defective pipe or hose.