

# General Description

ABS

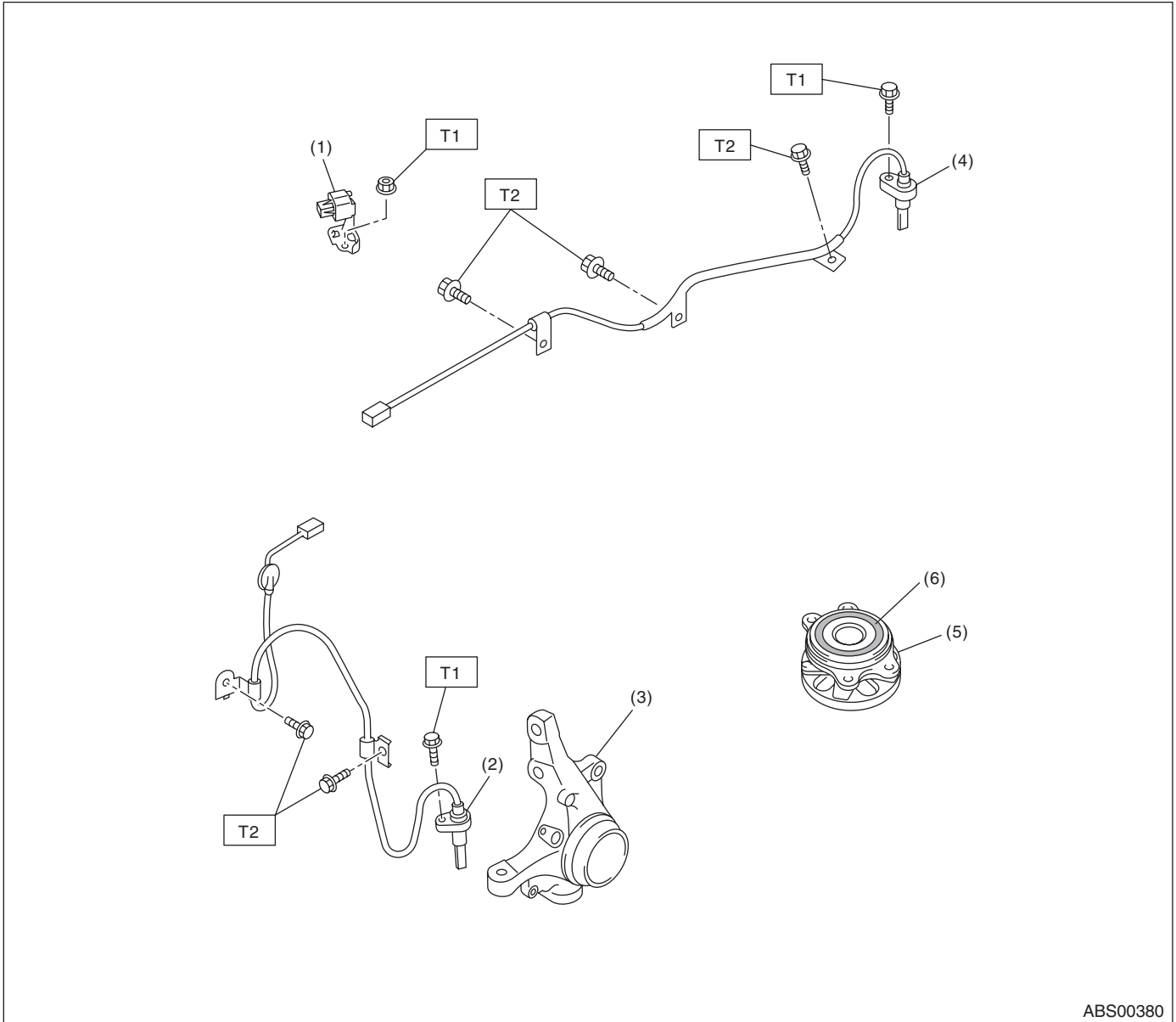
## 1. General Description

### A: SPECIFICATION

Item			Specification or identification	
ABS wheel speed sensor	ABS wheel speed sensor gap (for reference)	Front	0.77 — 1.43 mm (0.030 — 0.056 in)	
		Rear	0.64 — 1.56 mm (0.025 — 0.061 in)	
	Identifications of harness (marks, color)	Front	RH	K1 (White)
			LH	K2 (Yellow)
		Rear	RH	K5 (White)
			LH	K6 (Yellow)
G sensor	G sensor voltage	2.3±0.2 V		
ABSCM & H/U identification	AT (Except for OUTBACK)		J1	
	MT (Except for OUTBACK)		J2	
	AT (OUTBACK)		J3	
	MT (OUTBACK)		J4	

## B: COMPONENT

### 1. ABS WHEEL SPEED SENSOR



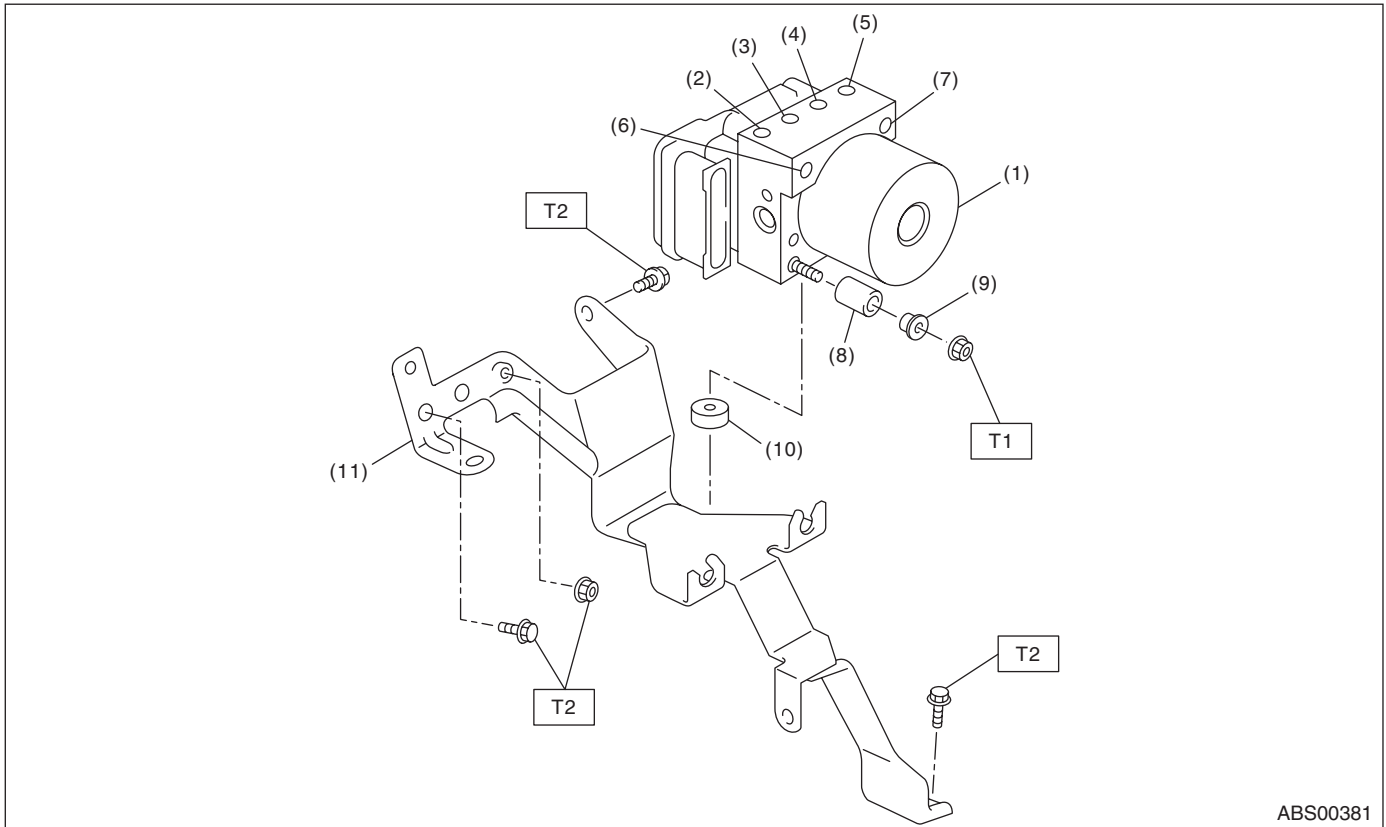
ABS00380

- |                                     |                                    |  |
|-------------------------------------|------------------------------------|--|
| (1) G sensor                        | (4) Rear ABS wheel speed sensor LH | <b>Tightening torque: N·m (kgf·m, ft·lb)</b> |
| (2) Front ABS wheel speed sensor LH | (5) Hub unit bearing               |  |
| (3) Front housing                   | (6) Magnetic encoder               |  |
- T1: 7.5 (0.76, 5.5)**  
**T2: 33 (3.3, 24)**

# General Description

ABS

## 2. ABS CONTROL MODULE AND HYDRAULIC CONTROL UNIT (ABSCM&H/U)



- |   |                     |              |
|---|---------------------|--------------|
| (1) ABS control module and hydraulic control unit (ABSCM&H/U) | (6) Primary inlet   | (11) Bracket |
| (2) Front outlet RH   | (7) Secondary inlet |              |
| (3) Rear outlet LH  | (8) Damper          |              |
| (4) Rear outlet RH  | (9) Spacer          |              |
| (5) Front outlet LH   | (10) Damper         |              |

**Tightening torque: N·m (kgf·m, ft·lb)**

**T1: 7.5 (0.76, 5.5)**

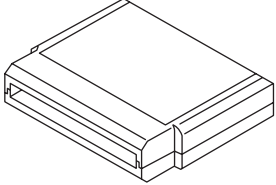

**T2: 33 (3.3, 24)**

### C: CAUTION

- Wear appropriate work clothing, including a cap, protective goggles and protective shoes when performing any work.
- Before disconnecting connectors of sensors or units, be sure to disconnect the ground cable from battery.
- Before removal, installation or disassembly, be sure to clarify the failure. Avoid unnecessary removal, installation, disassembly and replacement.
- Vehicle components are extremely hot after driving. Be wary of receiving burns from heated parts.
- Be sure to tighten fasteners including bolts and nuts to the specified torque.
- Place shop jacks or rigid racks at the specified points.

## D: PREPARATION TOOL

### 1. SPECIAL TOOL

ILLUSTRATION	TOOL NUMBER	DESCRIPTION	REMARKS
 ST18482AA010	18482AA010	CARTRIDGE	Troubleshooting for the electrical system
 ST22771AA030	22771AA030	SUBARU SELECT MONITOR KIT	Troubleshooting for the electrical system

### 2. GENERAL TOOL

TOOL NAME	REMARKS
Circuit tester	Used for measuring resistance, voltage and current.
Pressure gauge	Used for measuring oil pressure.
Oscilloscope	Used for measuring the sensor.
TORX® BIT E5	Used for replacing the ABSCM.