

General Description

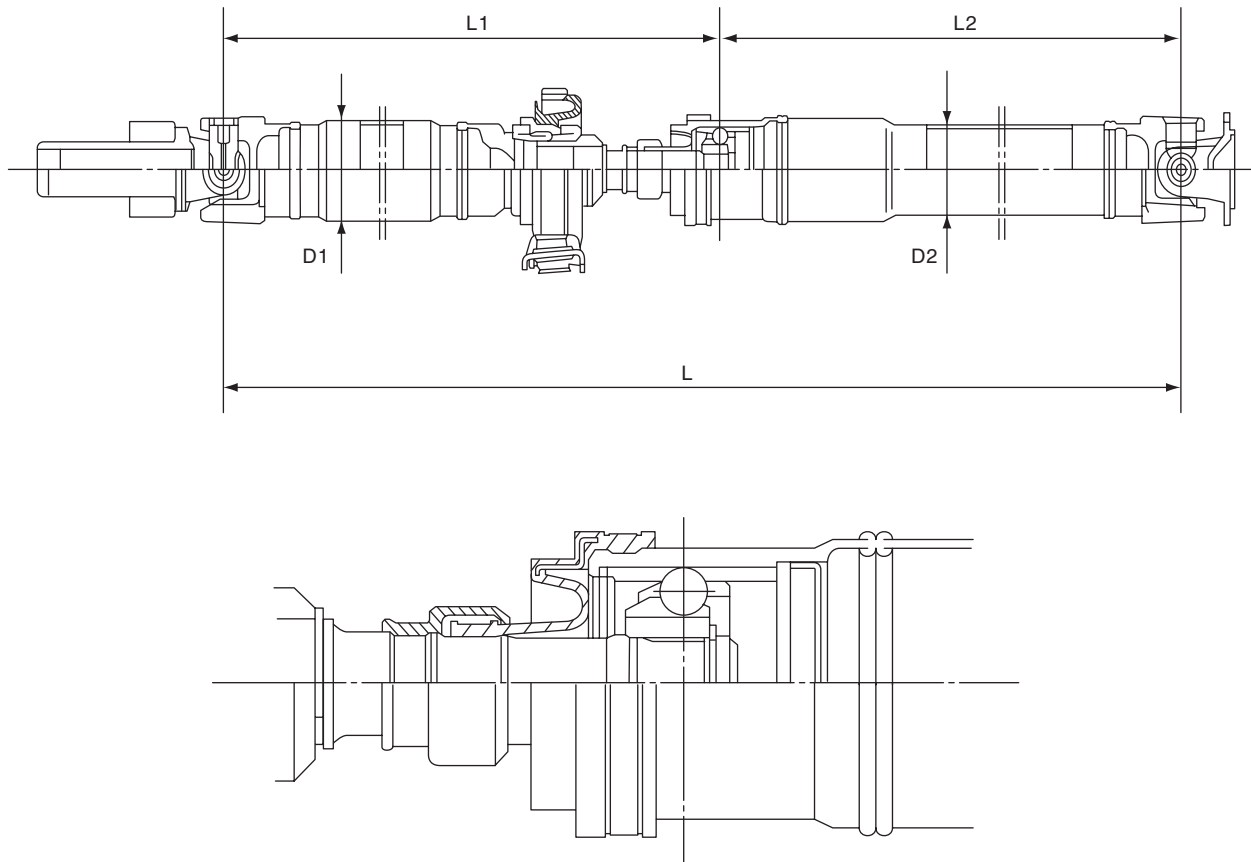
DRIVE SHAFT SYSTEM

1. General Description

A: SPECIFICATION

1. PROPELLER SHAFT

Model		5MT	4AT	5AT
Propeller shaft type		EDJ		
Propeller shaft length: L	mm (in)	1,483 (58.39)	1,423 (56.02)	1,310 (51.57)
Front propeller shaft Joint-to-joint length: L ₁	mm (in)	735 (28.9)	675 (26.6)	562 (22.1)
Rear propeller shaft Joint-to-Joint length: L ₂	mm (in)	748 (29.4)		
Outer diameter of tube:	mm (in)	D ₁	63.5 (2.50)	
		D ₂	57.5 (2.26)	

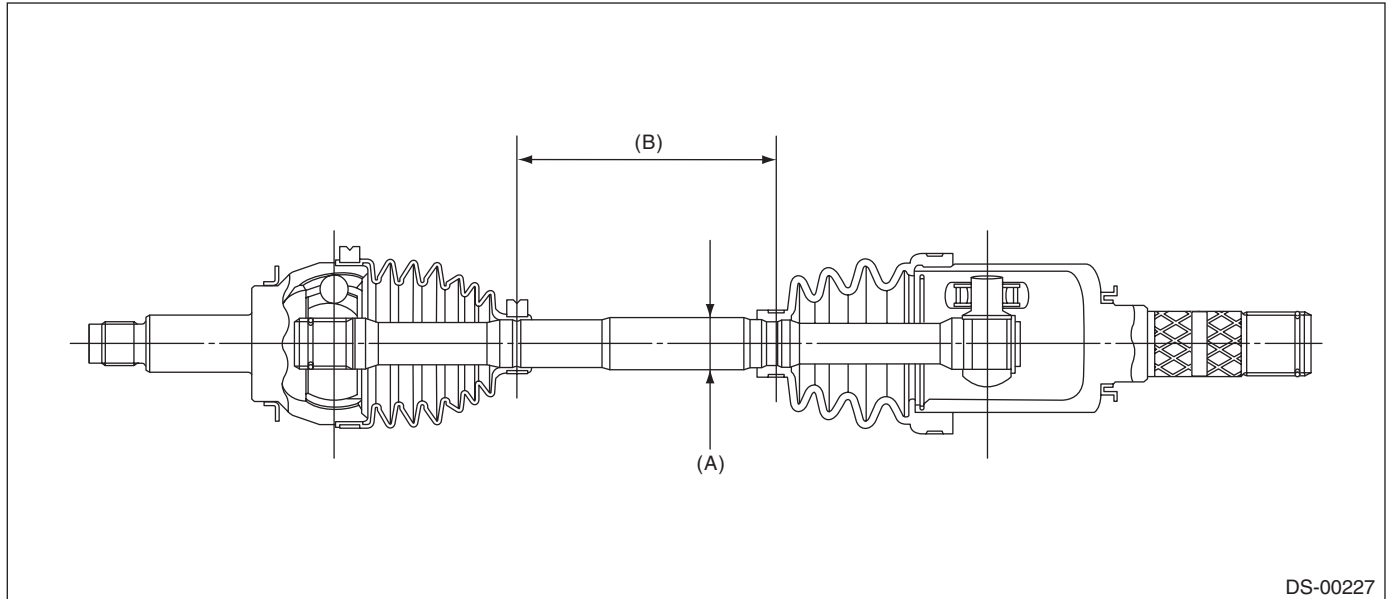


DS-00226

General Description

2. FRONT DRIVE SHAFT ASSEMBLY

Model	Type of drive shaft	Axle diameter ϕ D mm (in)	Axle length L mm (in)
All models	EBJ+PTJ	26 (1.0)	349.6 (13.76)

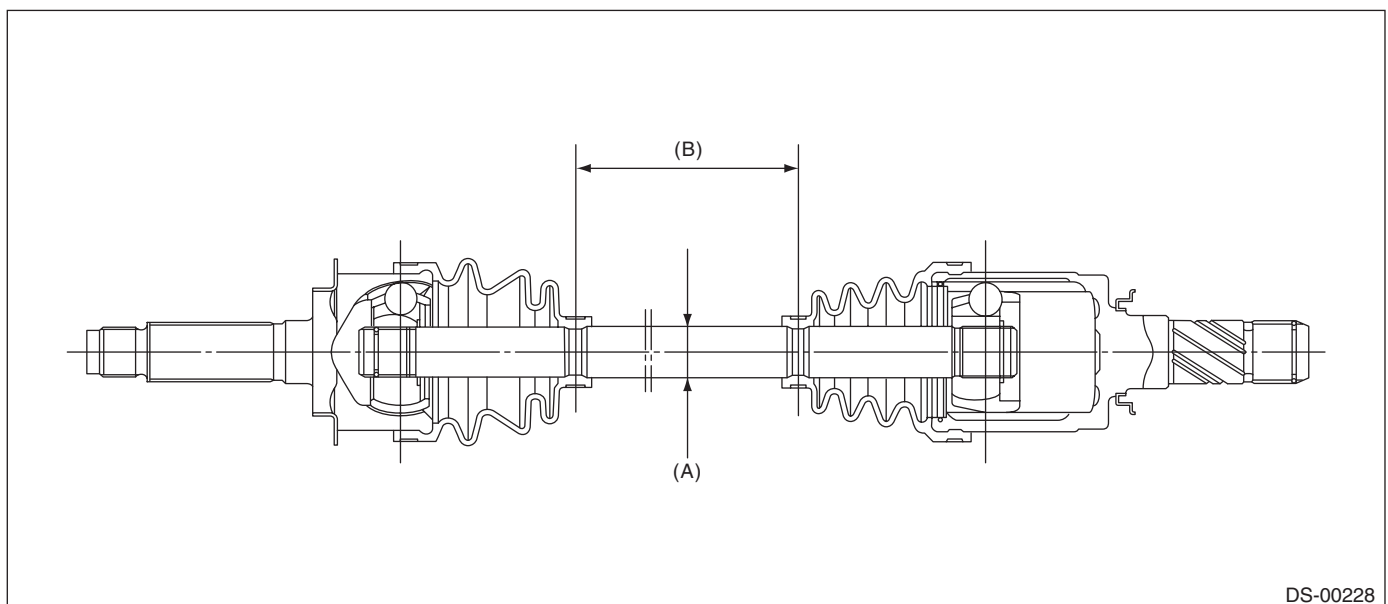


(A) Axle diameter

(B) Axle length

3. REAR DRIVE SHAFT ASSEMBLY

Model	Type of drive shaft	Axle diameter ϕ D mm (in)	Axle length L mm (in)
2.5 i AT	BJ + DOJ	22 (0.87)	366.5 (14.43)
Except for 2.5 i AT	EBJ+DOJ	22 (0.87)	375.1 (14.77)



(A) Axle diameter

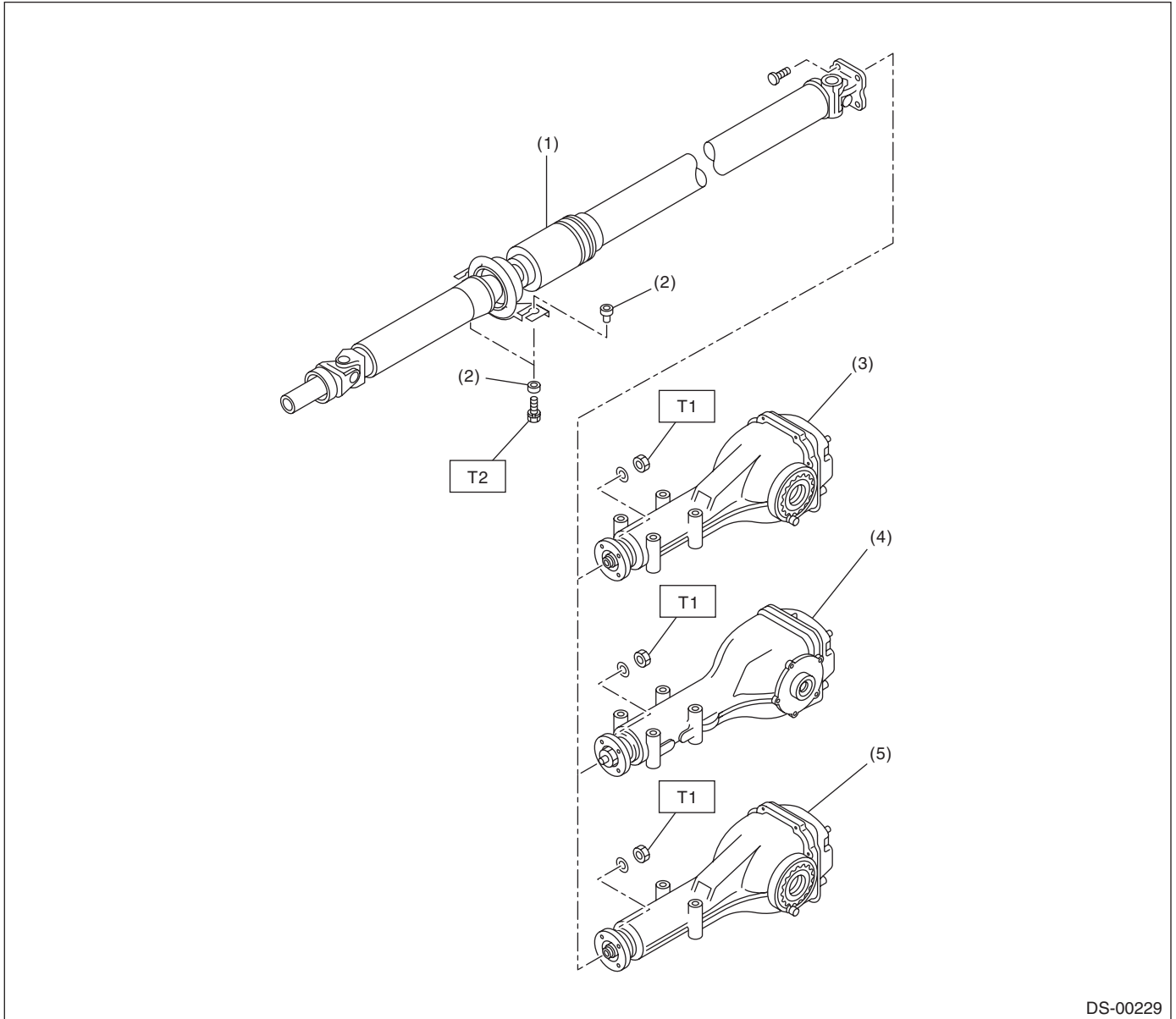
(B) Axle length

General Description

DRIVE SHAFT SYSTEM

B: COMPONENT

1. PROPELLER SHAFT



DS-00229

- (1) Propeller shaft
- (2) Bushing
- (3) Rear differential (VA1-type)

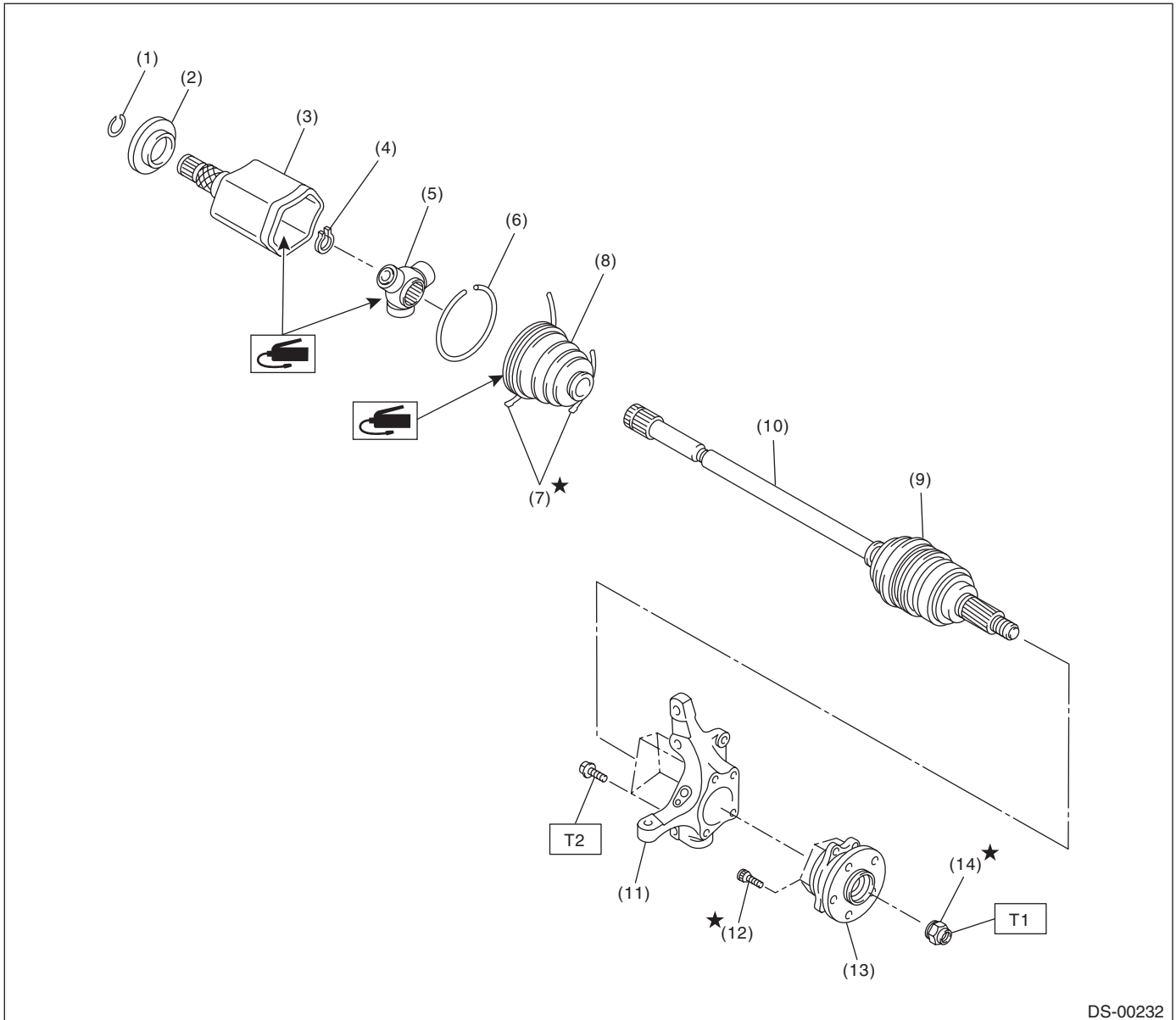
- (4) Rear differential (T-type)
- (5) Rear differential (VA2-type)

Tightening torque: N·m (kgf·m, ft·lb)

T1: 31 (3.2, 23.1)

T2: 52 (5.3, 38.3)

2. FRONT AXLE



DS-00232

- | | | |
|----------------------|---------------------|-----------------------------|
| (1) Circlip | (7) Boot band | (13) Front hub unit bearing |
| (2) Baffle plate | (8) Boot (PTJ) | (14) Axle nut |
| (3) Outer race (PTJ) | (9) Boot (EBJ) | |
| (4) Snap ring | (10) EBJ shaft ASSY | |
| (5) Trunnion | (11) Housing | |
| (6) Snap ring | (12) Hub bolt | |

Tightening torque: N-m (kgf-m, ft-lb)

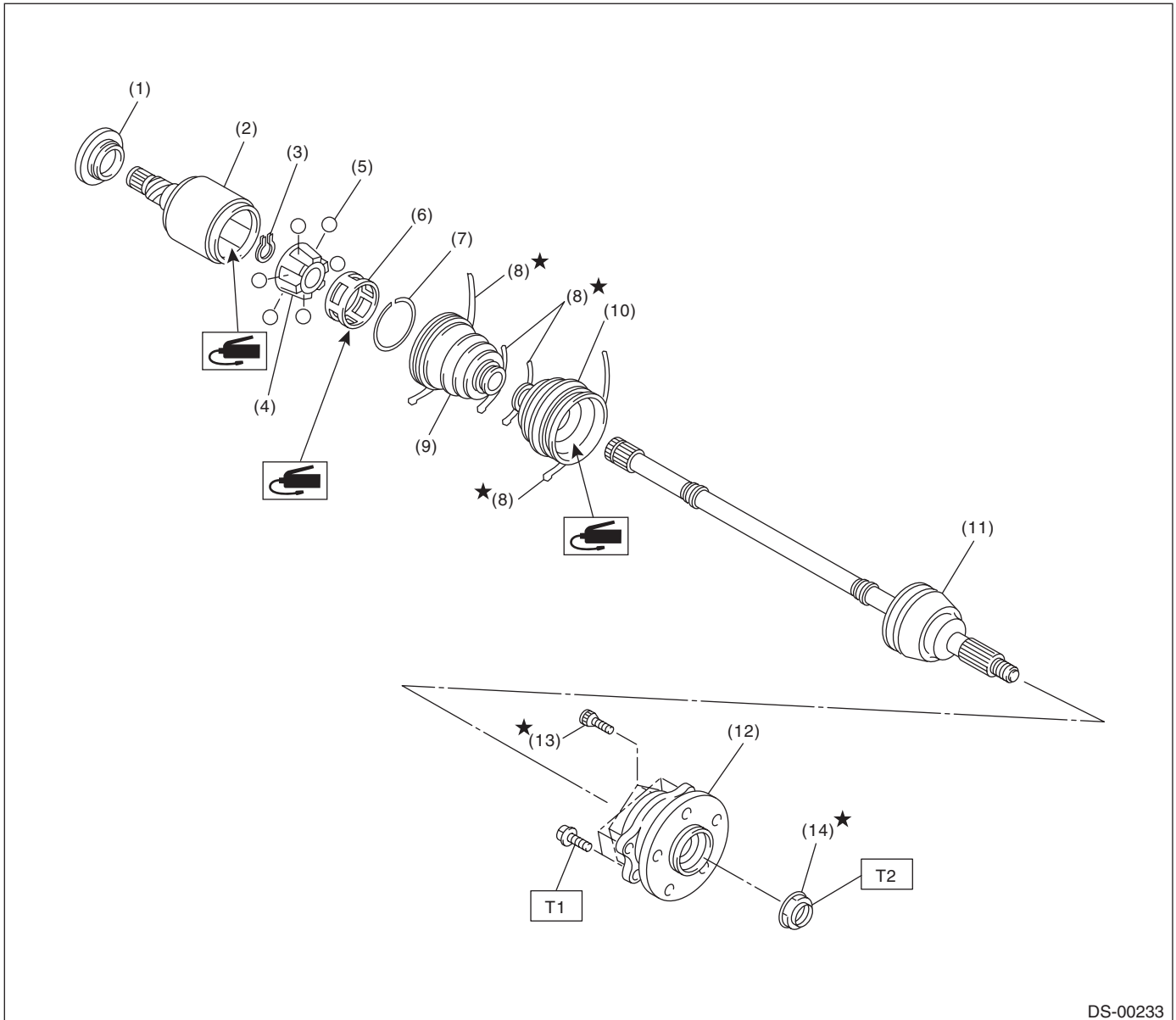
T1: 220 (22.4, 162)

T2: 65 (6.6, 47.9)

General Description

DRIVE SHAFT SYSTEM

3. REAR AXLE



DS-00233

- (1) Baffle plate (DOJ)
- (2) Outer race (DOJ)
- (3) Snap ring
- (4) Inner race
- (5) Ball
- (6) Cage
- (7) Snap ring

- (8) Boot band
- (9) Boot (DOJ)
- (10) Boot (BJ)
- (11) BJ shaft ASSY (2.5 i AT model)
EBJ shaft ASSY (Except for 2.5 i AT model)
- (12) Rear hub unit bearing

- (13) Hub bolt
- (14) Axle nut (olive color)

Tightening torque: N·m (kgf·m, ft·lb)

T1: 65 (6.6, 47.9)

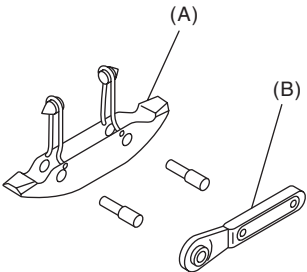
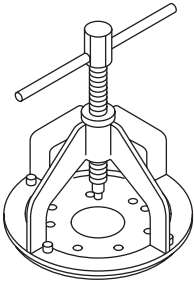
T2: 240 (24.5, 177)

C: CAUTION

- Wear appropriate work clothing, including a cap, protective goggles and protective shoes when performing any work.
- Remove contamination including dirt and corrosion before removal, installation or disassembly.
- Keep the disassembled parts in order and protect them from dust and dirt.
- Before removal, installation or disassembly, be sure to clarify the failure. Avoid unnecessary removal, installation, disassembly and replacement.
- Vehicle components are extremely hot after driving. Be wary of receiving burns from heated parts.
- Use SUBARU genuine grease etc. or equivalent. Do not mix grease etc. of different grades or manufacturers.
- Be sure to tighten fasteners including bolts and nuts to the specified torque.
- Place shop jacks or rigid racks at the specified points.
- Apply grease onto sliding or revolving surfaces before installation.
- Before installing snap rings, apply sufficient amount of grease to avoid damage and deformation.
- Before securing a part on a vise, place cushioning material such as wood blocks, aluminum plates, or waste cloth between the part and the vise.

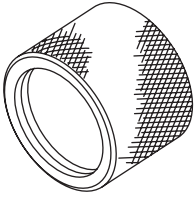
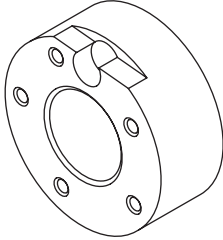
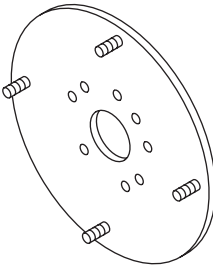
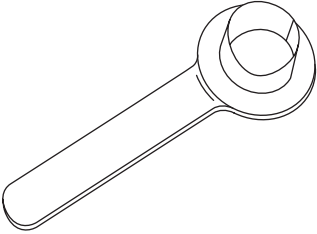
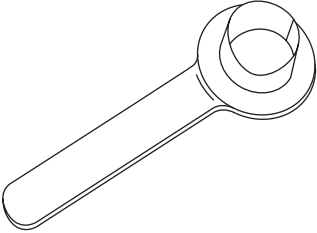
D: PREPARATION TOOL

1. SPECIAL TOOL

ILLUSTRATION	TOOL NUMBER	DESCRIPTION	REMARKS
 <p style="text-align: center;">ST-925091000</p>	925091000	BAND TIGHTENING TOOL	Used for tightening the boot band. (A) Jig for the band (B) Ratchet wrench
 <p style="text-align: center;">ST-926470000</p>	926470000	AXLE SHAFT PULLER	<ul style="list-style-type: none"> • Used for removing the axle shaft. • Used with AXLE SHAFT PULLER PLATE (28099PA110).

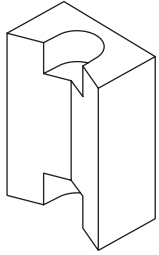
General Description

DRIVE SHAFT SYSTEM

ILLUSTRATION	TOOL NUMBER	DESCRIPTION	REMARKS
 <p style="text-align: center;">ST18675AA000</p>	18675AA000	DIFFERENTIAL SIDE OIL SEAL INSTALLER	Used for installing the differential side retainer oil seal.
 <p style="text-align: center;">ST-927080000</p>	927080000	HUB STAND	Used for assembling hub bolt in hub.
 <p style="text-align: center;">ST28099PA110</p>	28099PA110	AXLE SHAFT PULLER PLATE	Replaced with the plate of the AXLE SHAFT PULLER (926470000) before used.
 <p style="text-align: center;">ST28099PA090</p>	28099PA090	OIL SEAL PROTEC- TOR	<ul style="list-style-type: none"> • Used for installing the rear drive shaft to the rear differential. • For protecting the oil seal.
 <p style="text-align: center;">ST28399SA010</p>	28399SA010	OIL SEAL PROTEC- TOR	<ul style="list-style-type: none"> • Used for installing front drive shaft into front differential. • For protecting the oil seal.

General Description

DRIVE SHAFT SYSTEM

ILLUSTRATION	TOOL NUMBER	DESCRIPTION	REMARKS
 ST28399AG000	28399AG000	HUB STAND	Used for extracting hub bolt.

2. GENERAL TOOL

DESCRIPTION	REMARKS
Puller	Used for removing the ball joint from knuckle arm.
Dial gauge	Used for inspecting the propeller shaft run-out.
Extension cap	Used for preventing leakage of gear oil or ATF.
Bar	Used for extracting drive shaft.