

General Description

POWER ASSISTED SYSTEM (POWER STEERING)

1. General Description

A: SPECIFICATION

Model		OUTBACK except for 3.0 R	OUTBACK 3.0 R
Whole system	Minimum turning radius	m (ft) 5.4 (17.8)	
	Steering angle	Inner wheel	Except for OUTBACK: 37.2°±1.5° OUTBACK: 38.0°±1.5°
		Outer wheel	Except for OUTBACK: 33.0°±1.5° OUTBACK: 33.5°±1.5°
	Steering wheel diameter	mm (in) 375 (14.76)	
	Lock to lock turn	Excluding 2.5 GT: 3.2, 2.5 GT: 2.8	
Gearbox	Type	Rack and pinion, integral	
	Backlash	0 (Automatic adjusting)	
	Valve (Power steering system)	Rotary valve	
Pump (Power steering system)	Type	Vane pump	
	Oil tank	Installed on body	
	Specific output	cm ³ (cu in)/rev. 8.5 (0.519)	9.6 (0.586)
	Relief pressure	kPa (kg/cm ² , psi) 7,350 — 8,050 (75 — 82, 1,067 — 1,167)	8,300 — 9,000 (85 — 92, 1,204 — 1,305)
	Hydraulic fluid control	Engine speed sensitive	
	Hydraulic fluid	ℓ (USqt, Imp qt) 1,000 rpm: 6.15 (6.5, 5.4) 3,000 rpm: 5.5 (5.8, 4.8)	1,000 rpm: 6.5 (6.9, 5.7) 3,000 rpm: 5.5 (5.8, 4.8)
	RPM range	rpm 680 — 9,600	
	Direction of rotation	Clockwise	
Hydraulic oil (Power steering system)	Description	ATF DEXRON III or equivalent	
	Capacity ℓ (US qt, Imp qt)	Oil tank	0.2 (0.2, 0.2)
		Whole system	0.7 (0.7, 0.6)

Steering wheel	Free play	mm (in)	17 (0.67)
Steering shaft	Clearance between the steering wheel and column cover	mm (in)	3.0 (0.12)
Steering gear-box (Power steering system)	Rack shaft play in the radial direction	Right-turn steering	mm (in) 0.12 (0.005) or less
		In radial direction	mm (in) 0.26 (0.01) or less
	Input shaft play	In axial direction	mm (in) Without play
		Rotation resistance	N (kgf, lb) Maximum allowable value: 11.3 (1.15, 2.54) or less Difference between right and left sliding resistance: 24% or less
Oil pump (Power steering system)	Pulley shaft	Radial play	mm (in) 0.4 (0.016) or less
		Axial play	mm (in) 0.9 (0.035) or less
	Pulley	Ditch deflection	mm (in) 1.0 (0.039) or less
		Rotation resistance	N (kgf, lb) 9.22 (0.94, 2.07) or less
	Regular pressure (Unloaded)	kPa (kg/cm ² , psi) 981 (10, 142) or less	
Steering wheel effort (Power steering system)	At standstill with engine idling on paved road	N (kgf, lb) 29.4 (3.0, 6.6) or less	
	At standstill with engine stalled on paved road	N (kgf, lb) 294.2 (30, 66.2) or less	

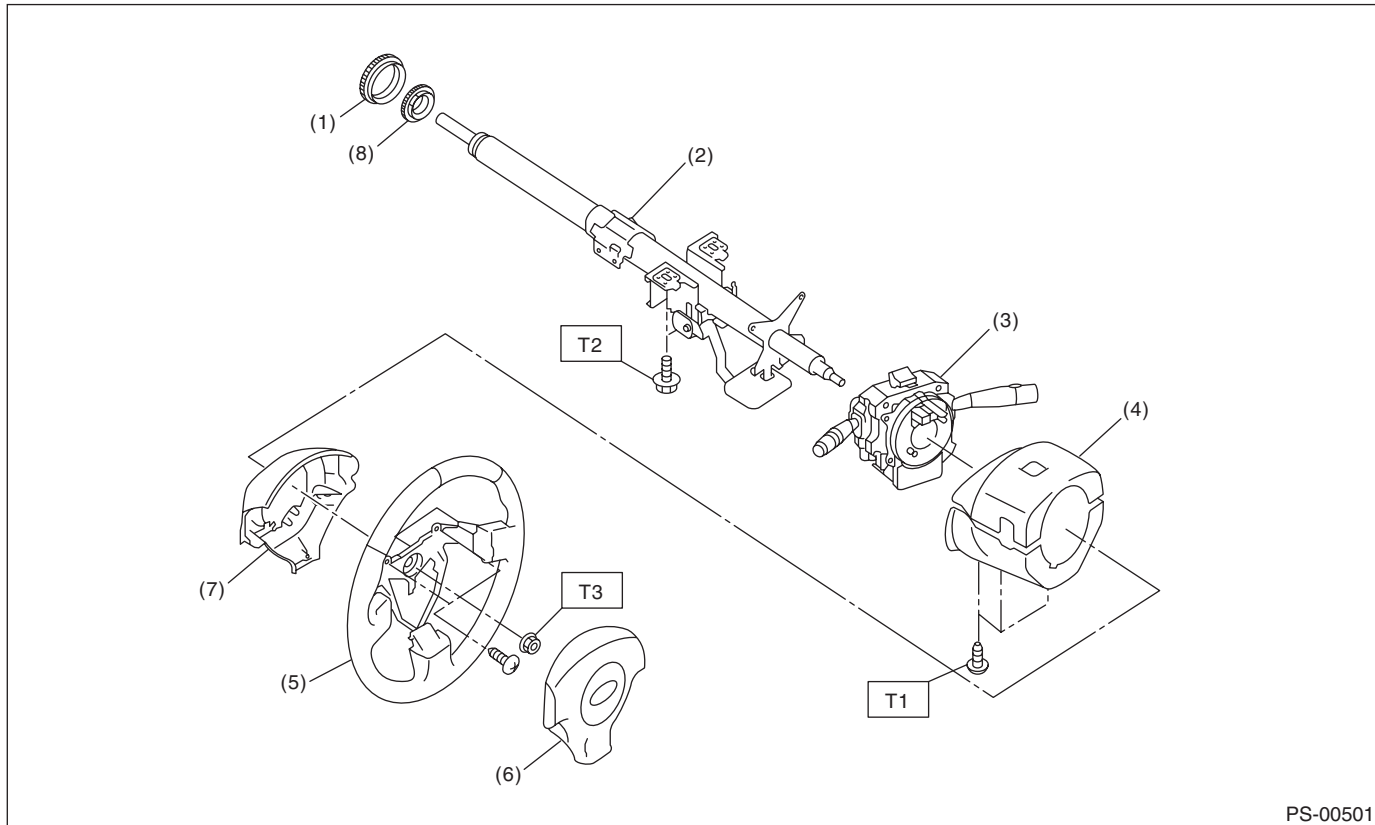
Recommended power steering fluid	Manufacturer
ATF DEXRON III or equivalent	B.P.
	CALTEX
	CASTROL
	MOBIL
	SHELL
	TEXACO

General Description

POWER ASSISTED SYSTEM (POWER STEERING)

B: COMPONENT

1. STEERING WHEEL AND COLUMN



PS-00501

- | | |
|-----------------------------|--------------------------------|
| (1) Bushing | (5) Steering wheel |
| (2) Steering shaft | (6) Airbag module |
| (3) Steering roll connector | (7) Steering wheel lower cover |
| (4) Column cover | (8) Insulator |

Tightening torque: N·m (kgf·m, ft·lb)

T1: 1.2 (0.12, 0.9)

T2: 25 (2.5, 18.1)

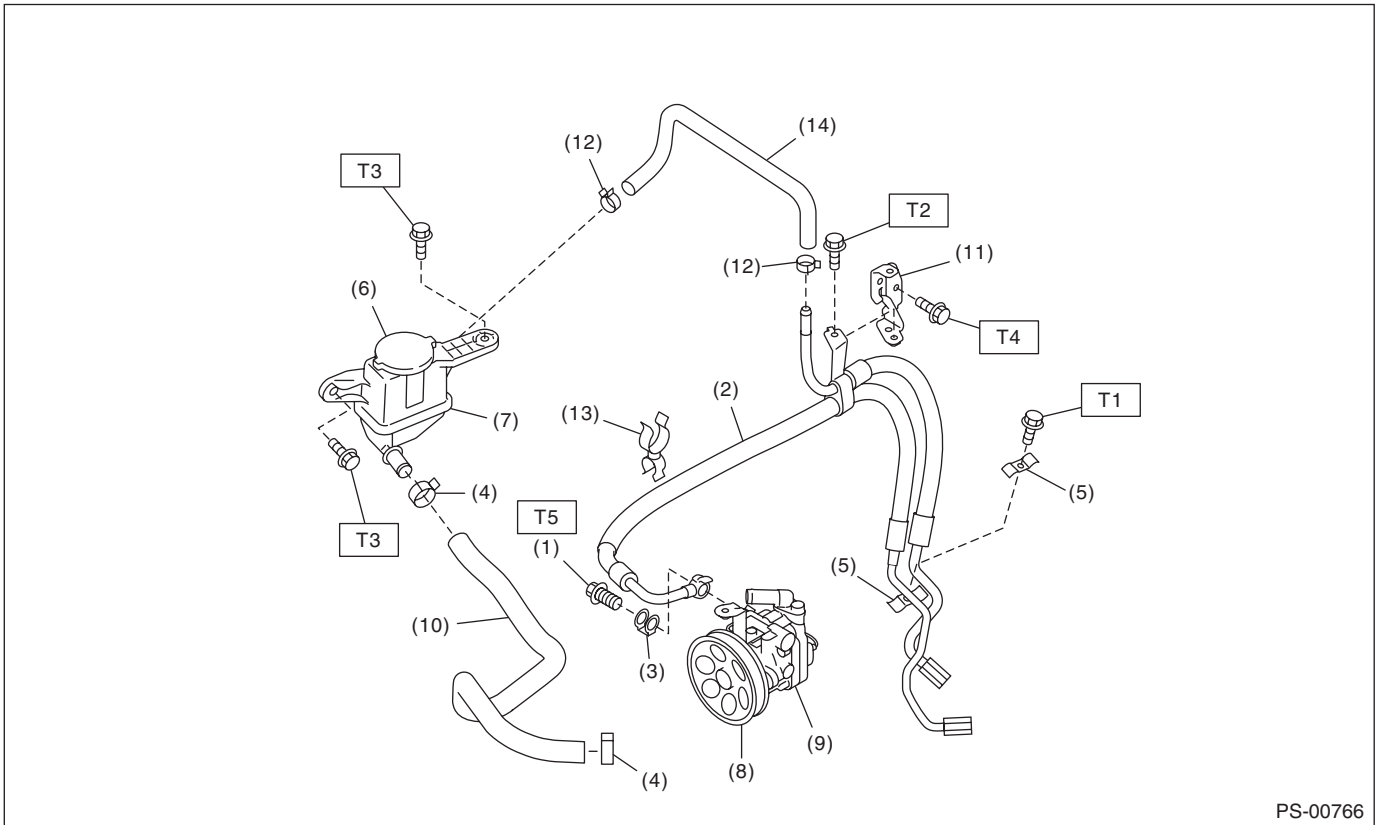
T3: 45 (4.6, 33.2)

General Description

POWER ASSISTED SYSTEM (POWER STEERING)

2. POWER ASSISTED SYSTEM

- Hose and tank (H4 model)



PS-00766

- | | |
|---------------------|-------------------|
| (1) Eye bolt | (8) Pulley |
| (2) Hose | (9) Oil pump |
| (3) Eye bolt gasket | (10) Suction hose |
| (4) Clip | (11) Hose bracket |
| (5) Clamp E | (12) Clip |
| (6) Cap | (13) Clip |
| (7) Reservoir tank | (14) Return hose |

Tightening torque: N-m (kgf-m, ft-lb)

T1: 7.5 (0.76, 5.53)

T2: 10 (1.02, 7.4)

T3: 13 (1.32, 9.6)

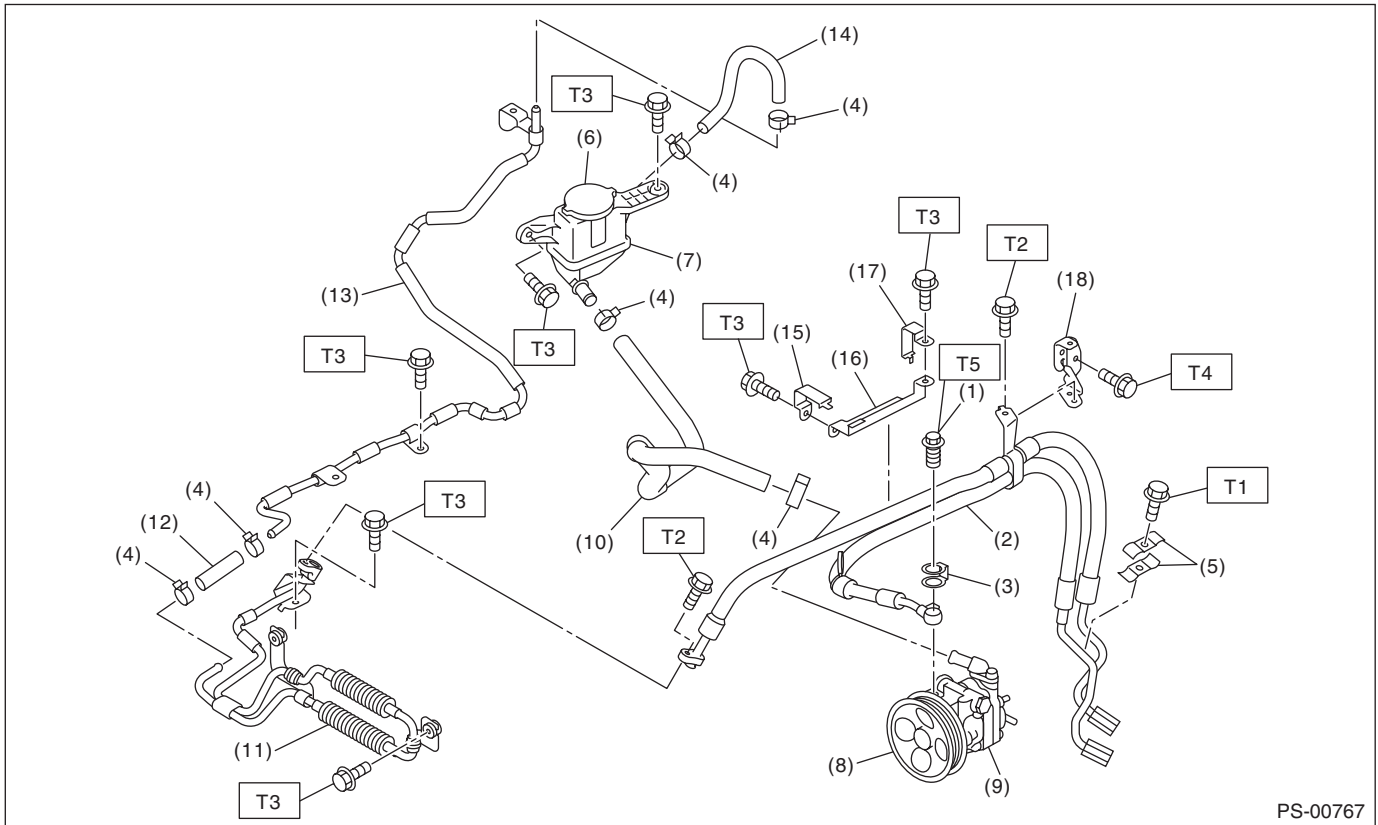
T4: 18 (1.84, 13.3)

T5: 40 (4.1, 29.5)

General Description

POWER ASSISTED SYSTEM (POWER STEERING)

- Hose and tank (H6 model)



PS-00767

- | | |
|---------------------|---------------------|
| (1) Eye bolt | (10) Suction hose |
| (2) Hose | (11) Cooler pipe |
| (3) Eye bolt gasket | (12) Return hose |
| (4) Clip | (13) Return pipe |
| (5) Clamp E | (14) Return hose |
| (6) Cap | (15) Hose bracket A |
| (7) Reservoir tank | (16) Hose bracket B |
| (8) Pulley | (17) Hose bracket C |
| (9) Oil pump | (18) Hose bracket D |

Tightening torque: N-m (kgf-m, ft-lb)

T1: 7.5 (0.76, 5.53)

T2: 10 (1.02, 7.4)

T3: 13 (1.32, 9.6)

T4: 15 (1.5, 10.8)

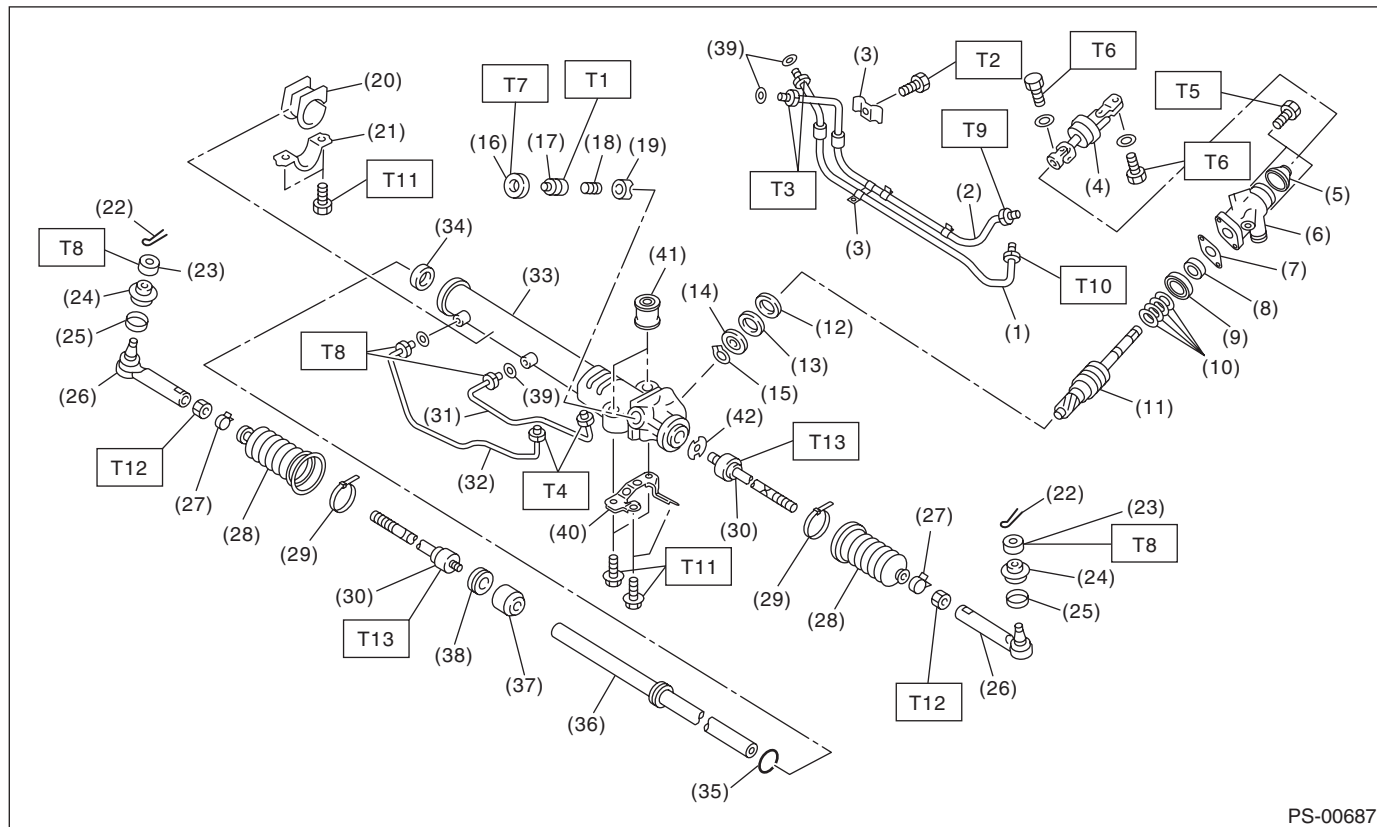
T5: 18 (1.84, 13.3)

T6: 40 (4.1, 29.5)

General Description

POWER ASSISTED SYSTEM (POWER STEERING)

• Gearbox



PS-00687

(1) Pipe C	(20) Adapter	(39) O-ring
(2) Pipe D	(21) Clamp	(40) Bracket
(3) Clamp plate	(22) Cotter pin	(41) Bushing
(4) Universal joint	(23) Castle nut	(42) Lock washer
(5) Dust seal	(24) Dust cover	
(6) Valve housing	(25) Clip	
(7) Gasket	(26) Tie-rod end	
(8) Oil seal	(27) Clip	
(9) Bushing	(28) Boot	
(10) Seal ring	(29) Band	
(11) Pinion & valve ASSY	(30) Tie-rod	
(12) Oil seal	(31) Pipe B	
(13) Back-up washer	(32) Pipe A	
(14) Ball bearing	(33) Steering body	
(15) Snap ring	(34) Oil seal	
(16) Lock nut	(35) Piston ring	
(17) Adjusting screw	(36) Rack	
(18) Spring	(37) Rack bushing	
(19) Sleeve	(38) Holder	

Tightening torque: N-m (kgf-m, ft-lb)

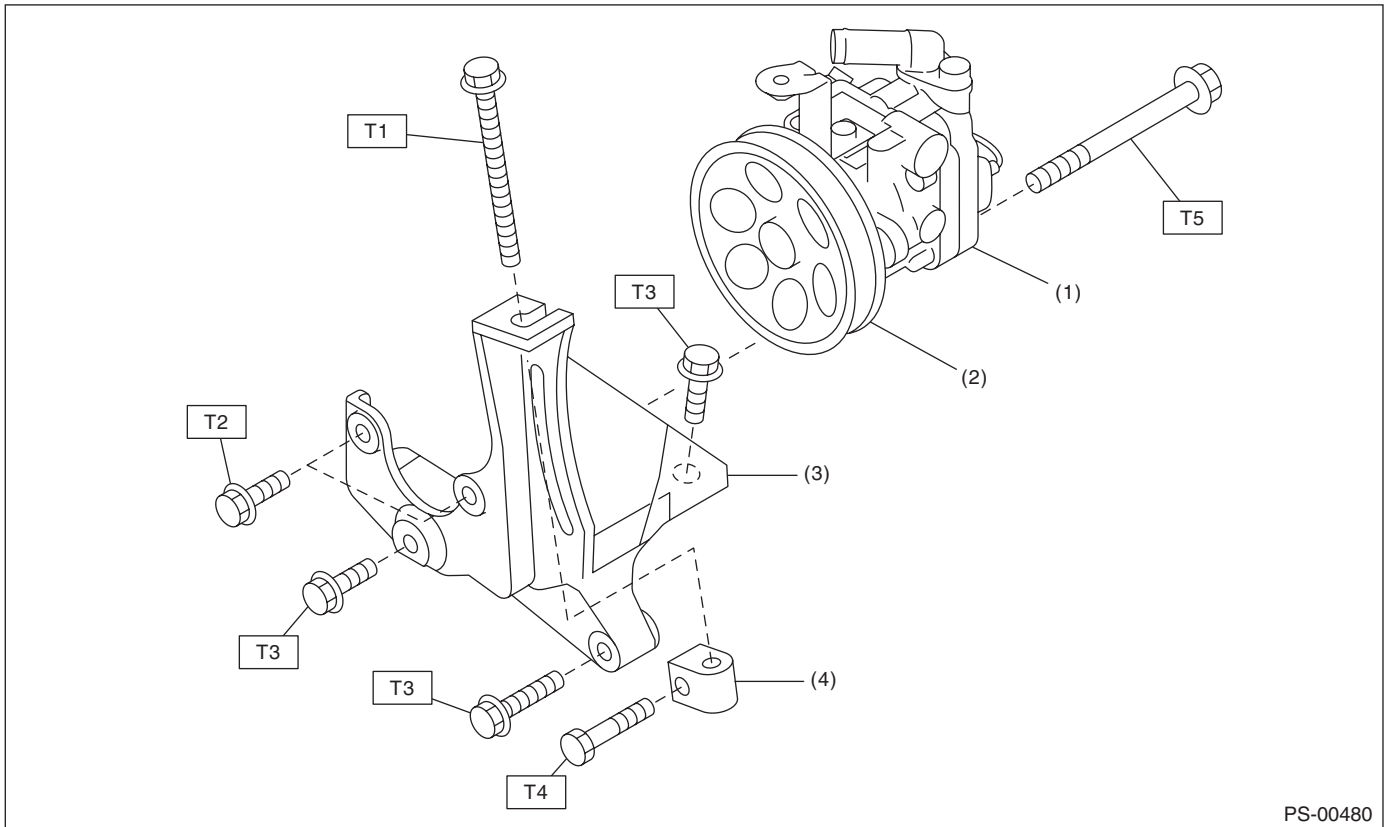
T1: 3.9 (0.4, 2.9)
T2: 10 (1.02, 7.4)
T3: 15 (1.5, 10.8)
T4: 17 (1.7, 12.5)
T5: 20 (2.0, 14.8)
T6: 24 (2.4, 17.4)
T7: 25 (2.5, 18.1)
T8: 27 (2.75, 19.9)
T9: 29 (3.0, 21.4)
T10: 37 (3.8, 27.3)
T11: 60 (6.1, 44.1)
T12: 85 (8.7, 62.7)
T13: 90 (9.1, 65.8)

General Description

POWER ASSISTED SYSTEM (POWER STEERING)

3. OIL PUMP

- H4 model



- (1) Oil pump
(2) Pulley

- (3) Bracket
(4) Belt tension nut

Tightening torque: N-m (kgf-m, ft-lb)

T1: 8 (0.8, 5.8)

T2: 15.7 (1.6, 11.6)

T3: 22 (2.2, 15.9)

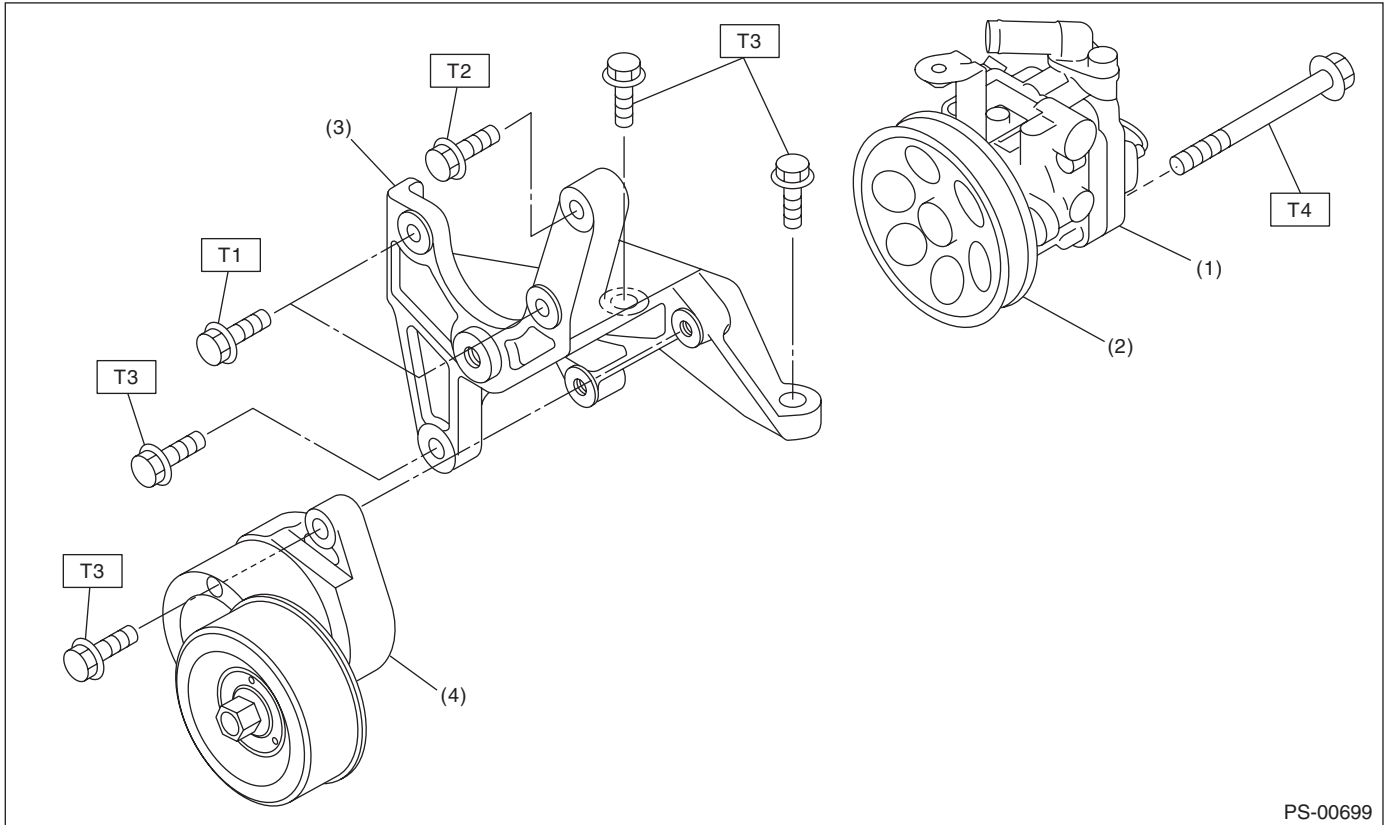
T4: 25 (2.5, 18.1)

T5: 37.3 (3.8, 27.5)

General Description

POWER ASSISTED SYSTEM (POWER STEERING)

- H6 model



- | | |
|--------------|--------------------|
| (1) Oil pump | (3) Bracket |
| (2) Pulley | (4) Belt tensioner |

Tightening torque: N-m (kgf-m, ft-lb)

T1: 15.7 (1.6, 11.6)

T2: 25 (2.5, 18.4)

T3: 33 (3.4, 24.3)

T4: 37.3 (3.8, 27.5)

C: CAUTION

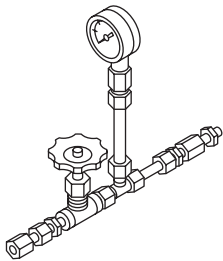
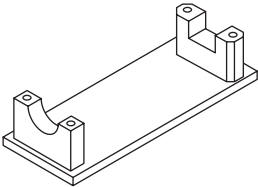
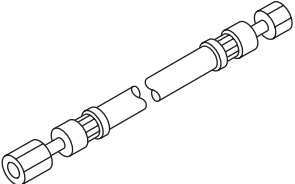
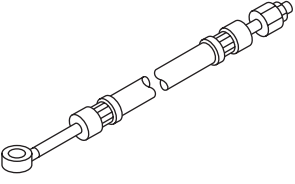
- Wear appropriate work clothing, including a cap, protective goggles and protective shoes when performing any work.
- Before removal, installation or disassembly, be sure to clarify the failure. Avoid unnecessary removal, installation, disassembly and replacement.
- Vehicle components are extremely hot after driving. Be wary of receiving burns from heated parts.
- Use SUBARU genuine power steering fluid, grease etc. or the equivalent. Do not mix fluid, grease etc. of different grades or manufacturers.
- Be sure to tighten fasteners including bolts and nuts to the specified torque.
- Place shop jacks or rigid racks at the specified points.
- Before securing a part on a vise, place cushioning material such as wooden blocks, aluminum plate or cloth between the part and the vise.

General Description

POWER ASSISTED SYSTEM (POWER STEERING)

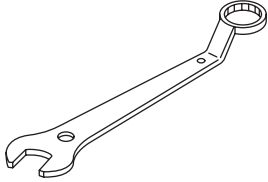
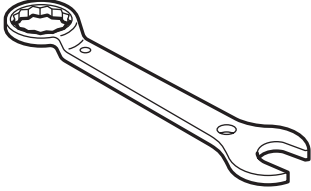
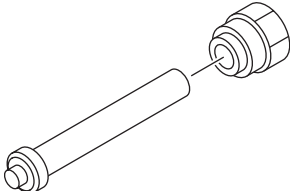
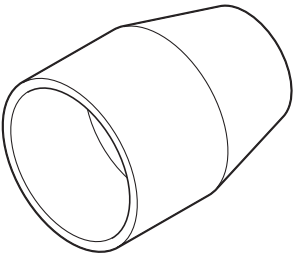
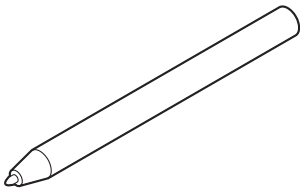
D: PREPARATION TOOL

1. SPECIAL TOOL

ILLUSTRATION	TOOL NUMBER	DESCRIPTION	REMARKS
 <p>ST-925711000</p>	925711000	PRESSURE GAUGE	Used for measuring oil pressure.
 <p>ST-926200000</p>	926200000	STAND	<ul style="list-style-type: none"> Used when inspecting characteristic of gear-box assembly and disassembling it. Used with BOSS D (34199AG000).
 <p>ST34099AC010</p>	34099AC010	ADAPTER HOSE A	Used with PRESSURE GAUGE (925711000).
 <p>ST34099AC020</p>	34099AC020	ADAPTER HOSE B	Used with PRESSURE GAUGE (925711000).

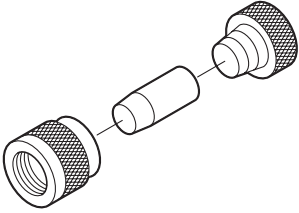
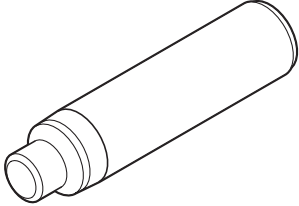
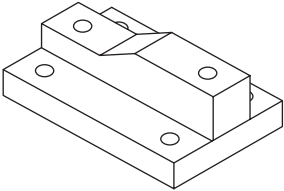
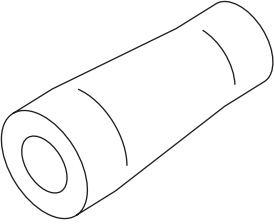
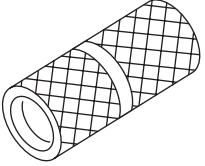
General Description

POWER ASSISTED SYSTEM (POWER STEERING)

ILLUSTRATION	TOOL NUMBER	DESCRIPTION	REMARKS
 <p style="text-align: center;">ST-926230000</p>	926230000	SPANNER	For the lock nut when adjusting backlash of gearbox.
 <p style="text-align: center;">ST34099PA100</p>	34099PA100	SPANNER	Used when measuring the rotating resistance of gearbox assembly.
 <p style="text-align: center;">ST-926420000</p>	926420000	PLUG	When fluid leaks from pinion side of gearbox assembly, remove pipe B from valve housing, attach this tool and check fluid leaking points.
 <p style="text-align: center;">ST-926250000</p>	926250000	GUIDE	Used for installing the holder assembly into the rack housing.
 <p style="text-align: center;">ST34099FA060</p>	34099FA060	PUNCH HOLDER	Used for crimping.

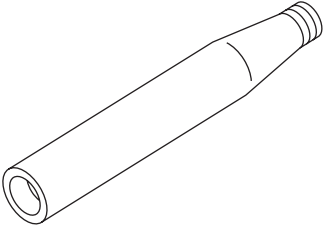
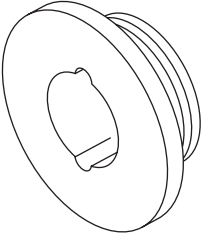
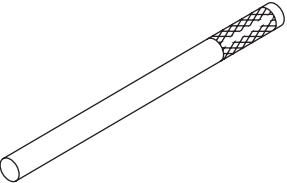
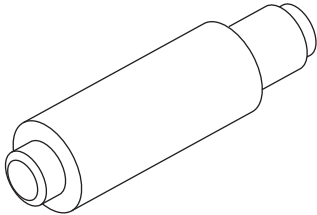
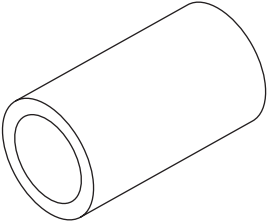
General Description

POWER ASSISTED SYSTEM (POWER STEERING)

ILLUSTRATION	TOOL NUMBER	DESCRIPTION	REMARKS
 <p data-bbox="337 516 467 537">ST-927490000</p>	927490000	INSTALLER A, B, C	Used for installing the oil seal to the rack assembly.
 <p data-bbox="329 867 467 888">ST34099FA030</p>	34099FA030	INSTALLER & REMOVER	Used for removing and installing the rack oil seal (outer & inner).
 <p data-bbox="321 1213 467 1234">ST34199AG000</p>	34199AG000	BOSS D	<ul style="list-style-type: none"> • Used when inspecting characteristic of gear-box assembly and disassembling it. • Used with STAND (926200000).
 <p data-bbox="321 1566 467 1587">ST34199AG030</p>	34199AG030	GUIDE	Used for installing seal ring of rack.
 <p data-bbox="321 1917 467 1938">ST34199AG070</p>	34199AG070	FORMER	Used for forming seal ring of pinion.

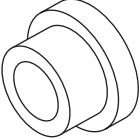
General Description

POWER ASSISTED SYSTEM (POWER STEERING)

ILLUSTRATION	TOOL NUMBER	DESCRIPTION	REMARKS
 <p style="text-align: center;">ST34199AG020</p>	34199AG020	GUIDE	Used for installing seal ring of pinion.
 <p style="text-align: center;">ST34199AG050</p>	34199AG050	GUIDE G (24)	<ul style="list-style-type: none"> • Used for forming seal ring of rack. • Used with FORMER PISTON (34199AG080).
 <p style="text-align: center;">ST34199AE050</p>	34199AE050	OIL SEAL REMOVER	Used for removing oil seal.
 <p style="text-align: center;">ST34199AG090</p>	34199AG090	INSTALLER & REMOVER	<ul style="list-style-type: none"> • Used for installing oil seal of valve housing. • Used with SEAL INSTALLER. (34099FA130) • Used for installing ball bearing of valve housing. • Used for removing oil seal and ball bearing from valve housing.
 <p style="text-align: center;">ST34199AG080</p>	34199AG080	FORMER PISTON	<ul style="list-style-type: none"> • Used for forming seal ring of rack. • Used with GUIDE G (24) (34199AG050).

General Description

POWER ASSISTED SYSTEM (POWER STEERING)

ILLUSTRATION	TOOL NUMBER	DESCRIPTION	REMARKS
 <p data-bbox="324 514 462 535">ST34199AG010</p>	34199AG010	INSTALLER	Used for pressing-fit oil seal of gearbox cylinder.