

General Description

VEHICLE DYNAMICS CONTROL (VDC)

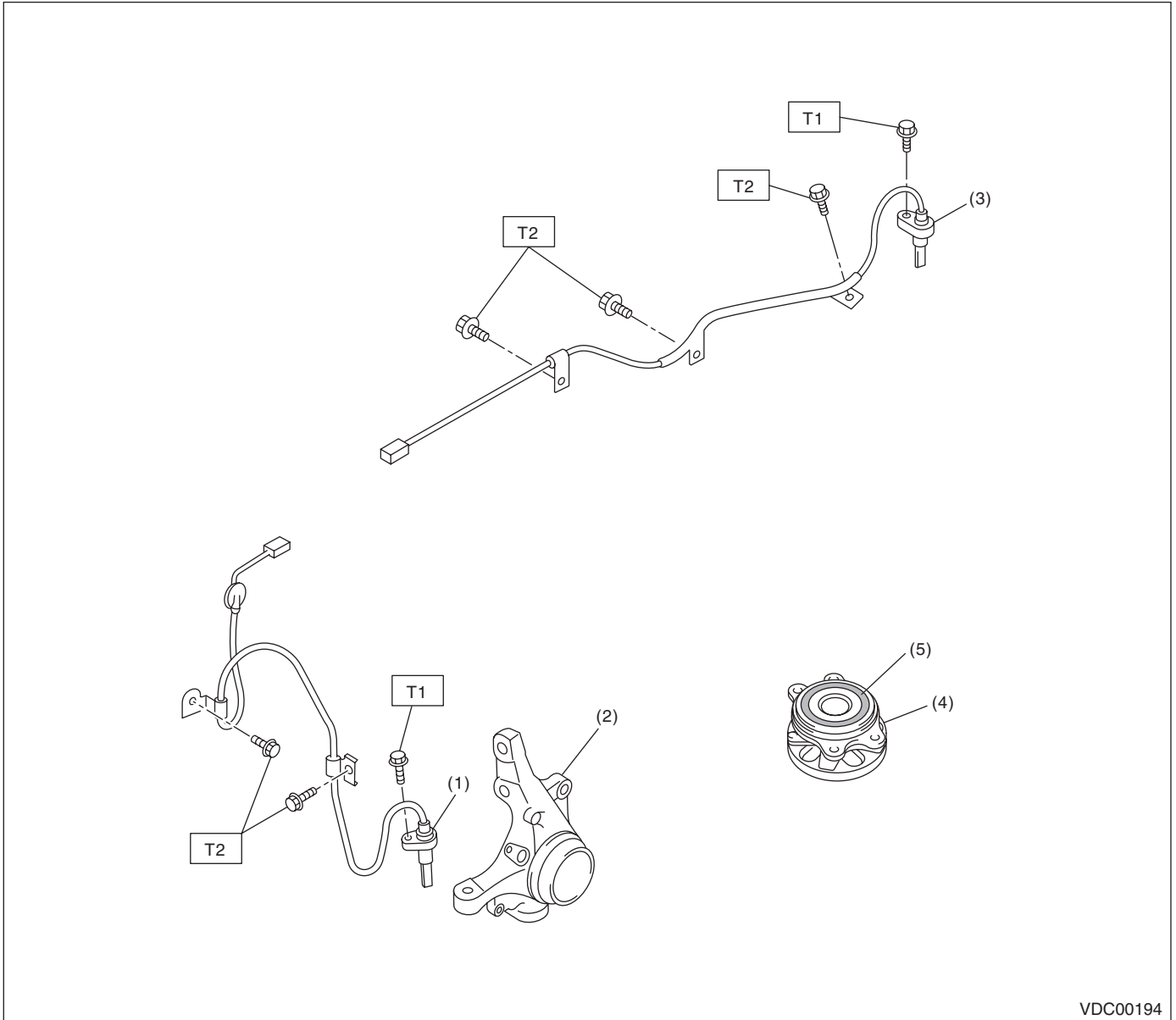
1. General Description

A: SPECIFICATION

Item			Specification or identification	
ABS wheel speed sensor	ABS wheel speed sensor gap (for reference)	Front	0.77 — 1.43 mm (0.030 — 0.056 in)	
		Rear	0.64 — 1.56 mm (0.025 — 0.061 in)	
	Identifications of harness (marks, color)	Front	RH	K1 (White)
			LH	K2 (Yellow)
		Rear	RH	K5 (White)
			LH	K6 (Yellow)
Yaw rate & lateral G sensor	Lateral G sensor voltage	2.5±0.2 V		
VDCCM&H/U Identification	WAGON OUTBACK 3.0 R	G5		

B: COMPONENT

1. ABS WHEEL SPEED SENSOR



- | | |
|----------------------------------|----------------------|
| (1) Front ABS wheel speed sensor | (4) Hub unit bearing |
| (2) Front housing | (5) Magnetic encoder |
| (3) Rear ABS wheel speed sensor | |

Tightening torque: N·m (kgf·m, ft·lb)

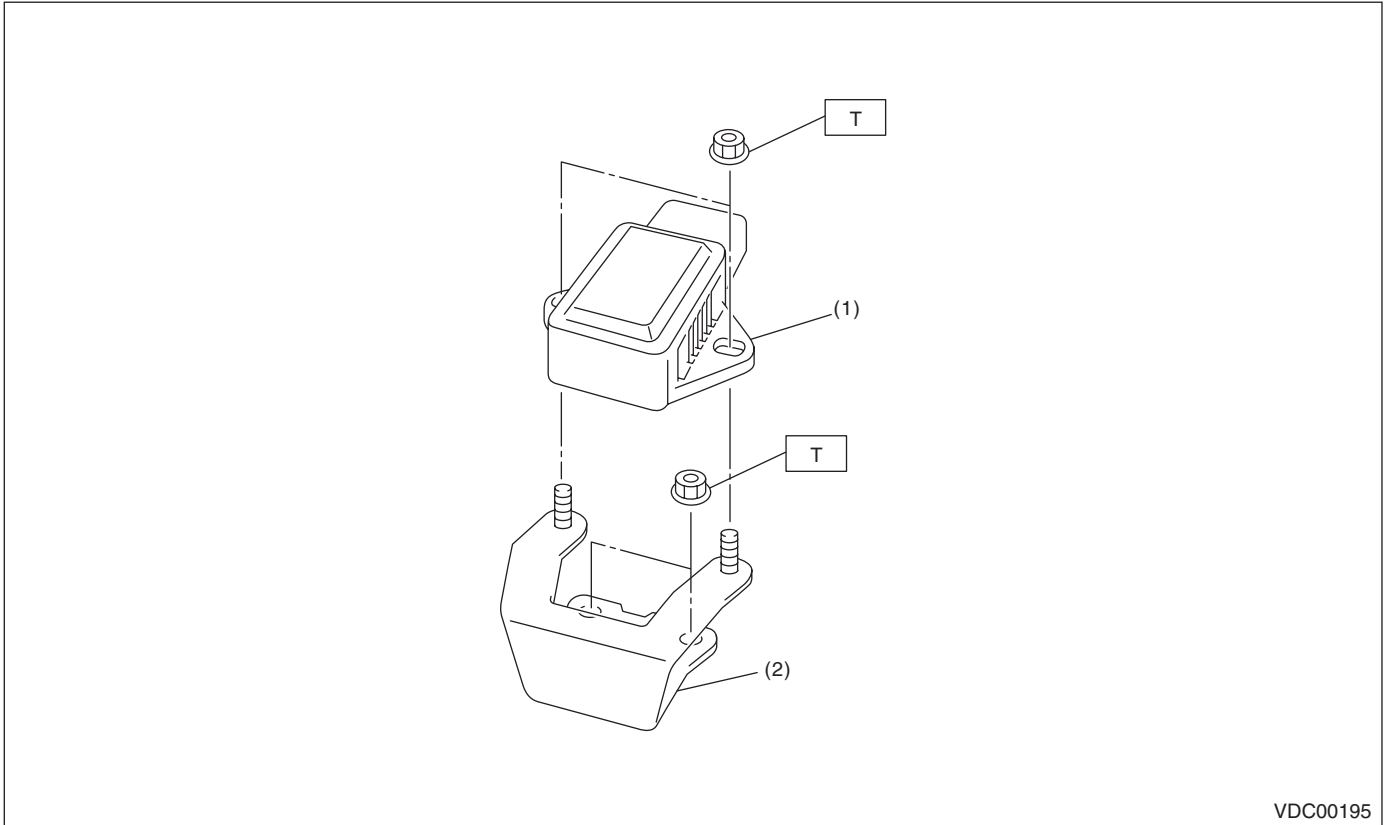
T1: 7.5 (0.76, 5.5)

T2: 33 (3.4, 24)

General Description

VEHICLE DYNAMICS CONTROL (VDC)

2. YAW RATE AND LATERAL G SENSOR

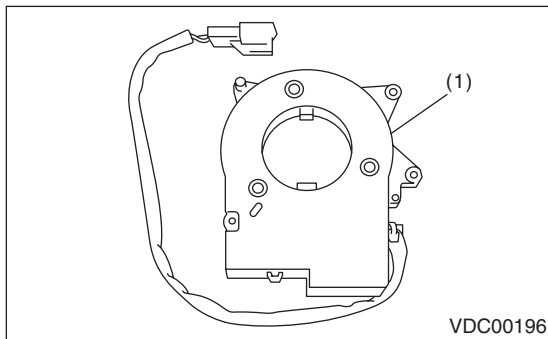


VDC00195

- (1) Yaw rate & lateral G sensor (2) Bracket

Tightening torque: N·m (kgf·m, ft·lb)
T: 7.5 (0.76, 5.5)

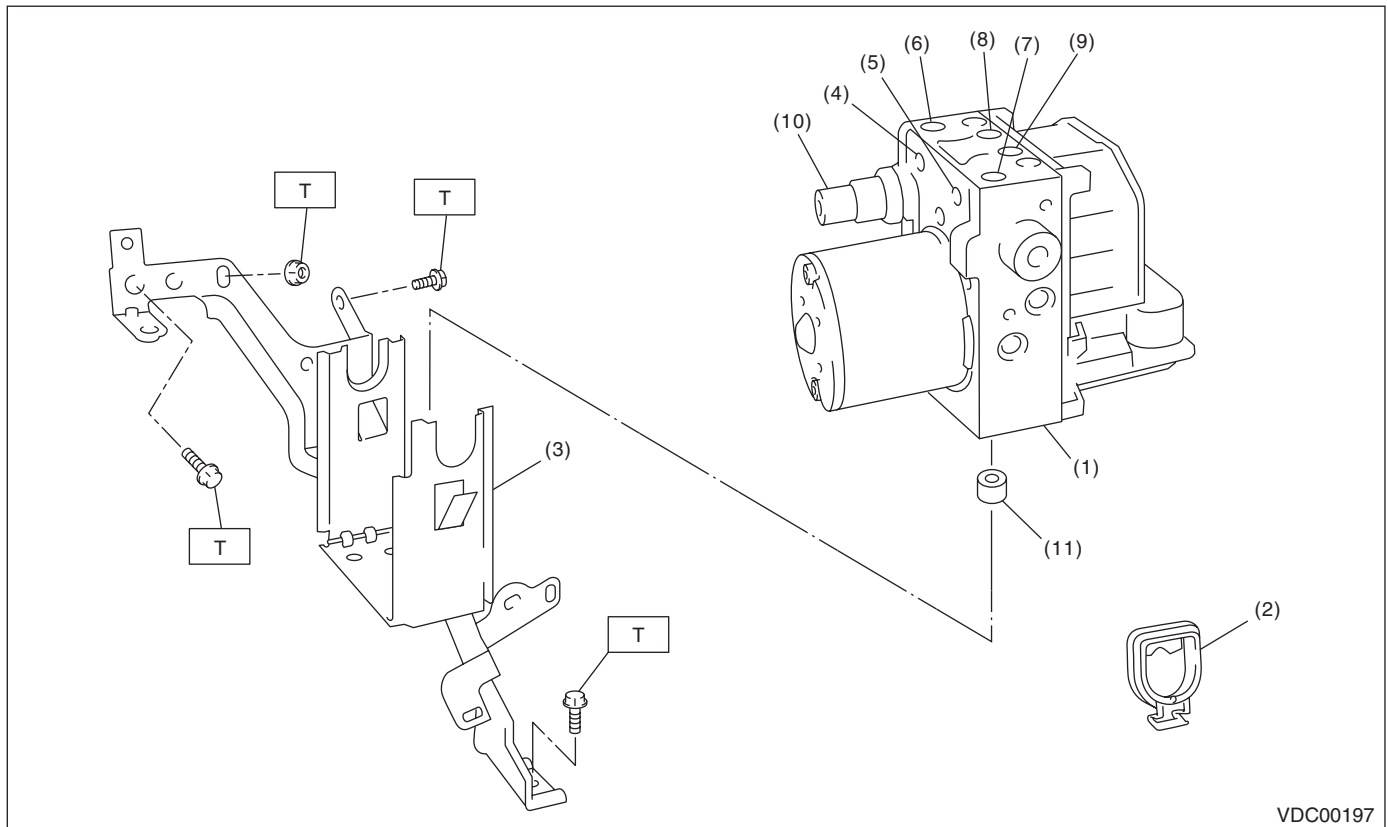
3. STEERING ANGLE SENSOR



VDC00196

- (1) Steering angle sensor

4. VDC CONTROL MODULE AND HYDRAULIC CONTROL UNIT (VDCCM&H/U)



- | | | |
|---|---------------------|----------------------|
| (1) VDC control module and hydraulic control unit (VDCCM&H/U) | (5) Rear LH outlet | (10) Pressure sensor |
| (2) Clip | (6) Secondary inlet | (11) Damper |
| (3) Bracket | (7) Primary inlet | |
| (4) Rear RH outlet | (8) Front LH outlet | |
| | (9) Front RH outlet | |

Tightening torque: N·m (kgf·m, ft·lb)
T: 33 (3.4, 24)

C: CAUTION

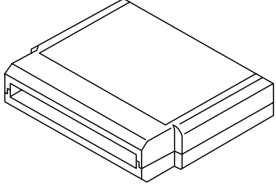

- Wear appropriate work clothing, including a cap, protective goggles and protective shoes when performing any work.
- Remove contamination including dirt and corrosion before removal, installation or disassembly.
- Keep the disassembled parts in order and protect them from dust and dirt.
- Before disconnecting connectors of sensors or units, be sure to disconnect the ground cable from battery.
- Before removal, installation or disassembly, be sure to clarify the failure. Avoid unnecessary removal, installation, disassembly and replacement.
- Vehicle components are extremely hot after driving. Be wary of receiving burns from heated parts.
- Be sure to tighten fasteners including bolts and nuts to the specified torque.
- Place shop jacks or rigid racks at the specified points.

General Description

VEHICLE DYNAMICS CONTROL (VDC)

D: PREPARATION TOOL

1. SPECIAL TOOL

ILLUSTRATION	TOOL NUMBER	DESCRIPTION	REMARKS
 ST18482AA010	18482AA010	CARTRIDGE	Troubleshooting for the electrical system
 ST22771AA030	22771AA030	SUBARU SELECT MONITOR KIT	Troubleshooting for the electrical system

2. GENERAL TOOL

TOOL NAME	REMARKS
Circuit tester	Used for measuring resistance, voltage and current.
Pressure gauge	Used for measuring oil pressure.
Oscilloscope	Used for measuring the sensor.