

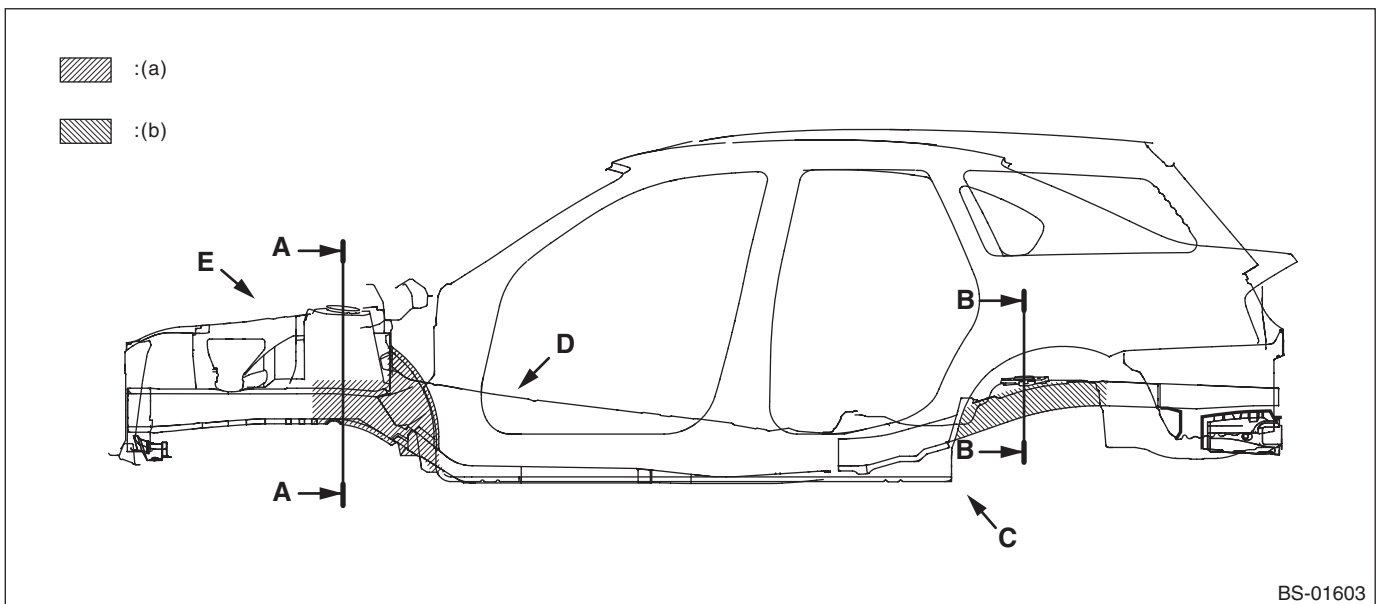
## 7. Under Coat

### A: SPECIFICATION

#### Repair material:

#### **THREE BOND 6115**

- 1) The application thickness is 0.4 mm or more when no instruction is indicated.
- 2) Take care that under coat does not become attached to other locations than shown in the figures and the following locations.
  - High-temperature parts related to the exhaust pipe
  - Hoses, tubes, and harness parts
  - Installation surfaces of rear suspension, transmission, subframe, etc.
- 3) Application area
  - Side view



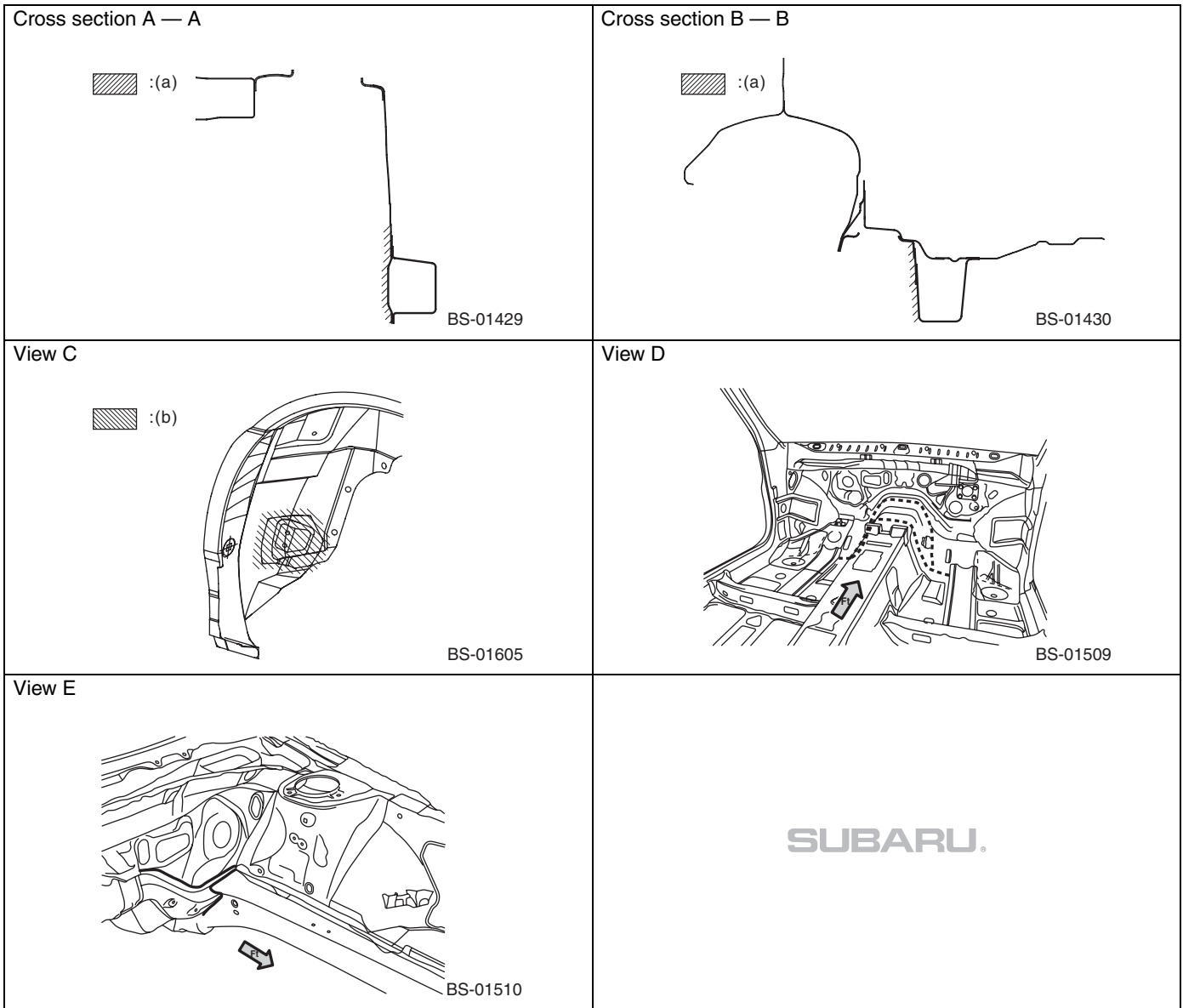
BS-01603

(a) Under coat application locations

(b) Under coat application locations  
(Film thickness = 600  $\mu\text{m}$  or more)

# Under Coat

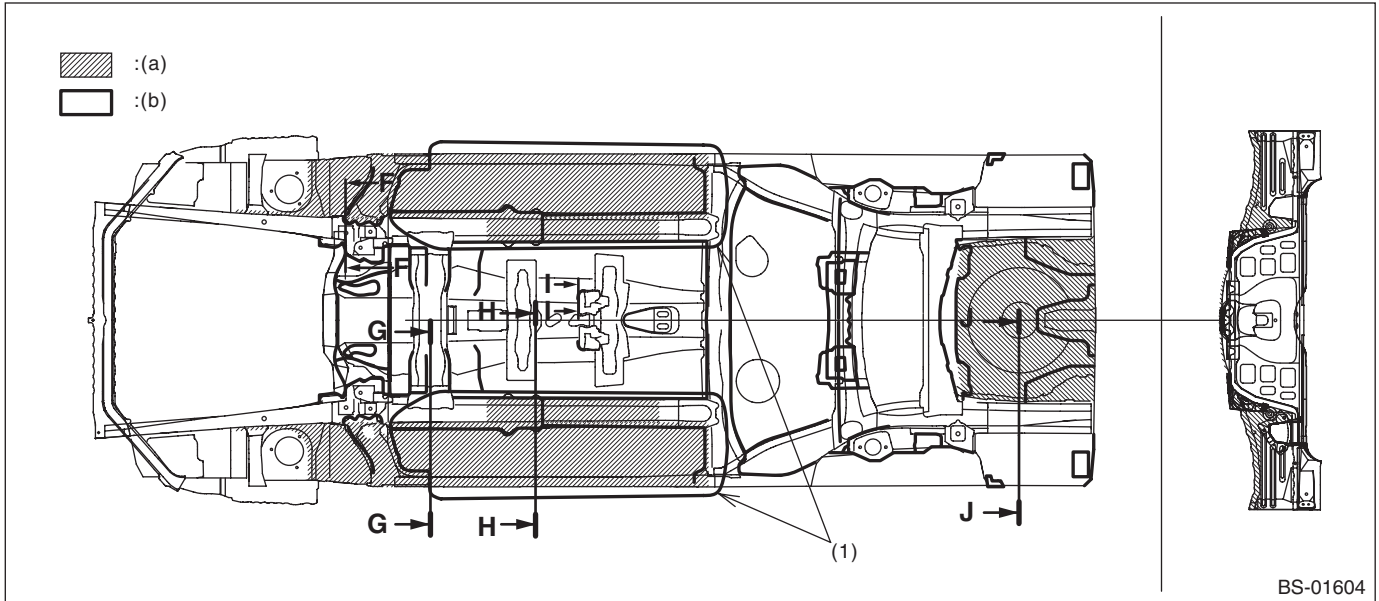
## BODY STRUCTURE



(a) Under coat application locations

(b) Under coat application locations  
(Film thickness = 600  $\mu$  or more)

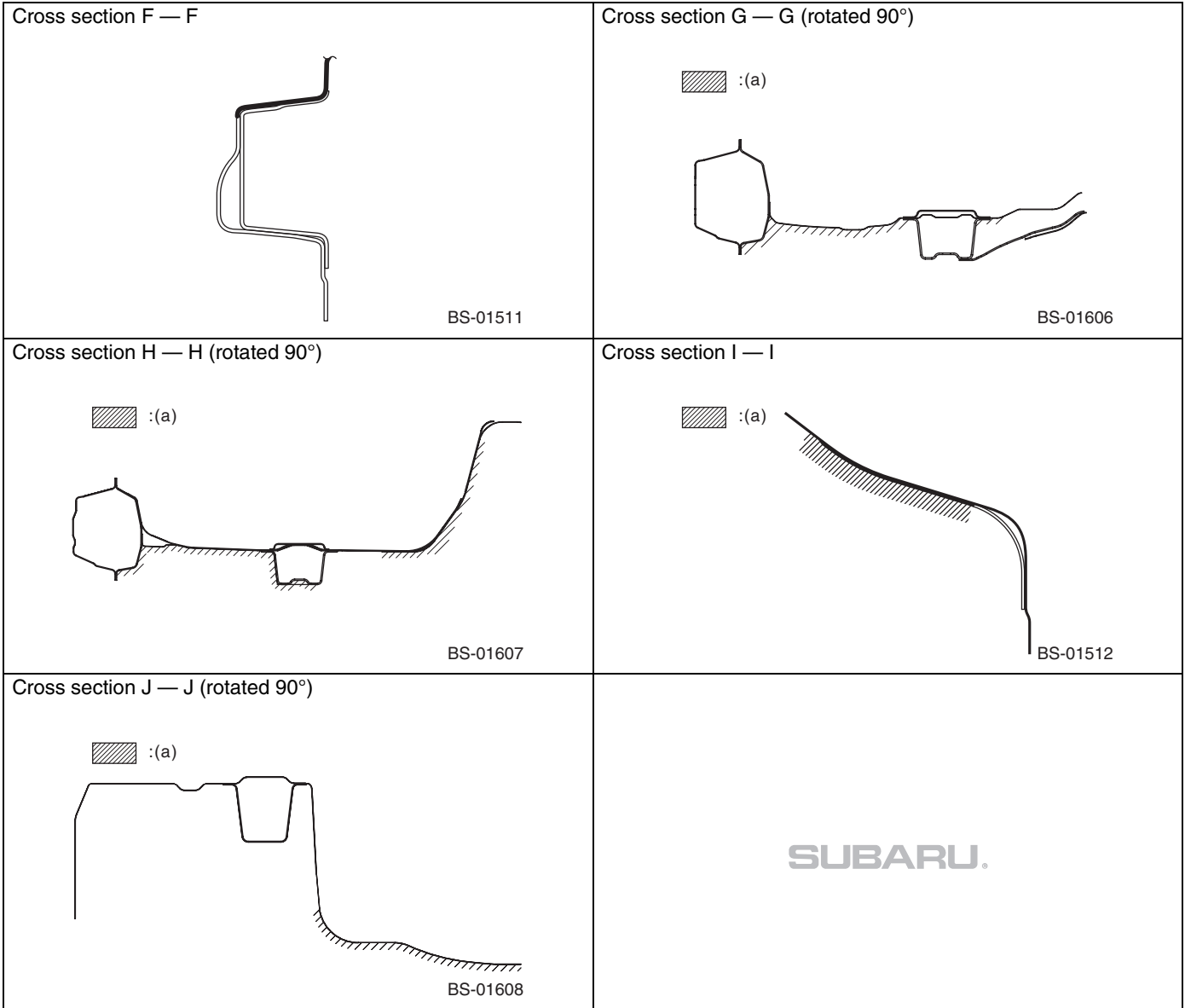
- Bottom view/rear view



- (1) For models with an under cover, no under coat is required in this area.
- (a), (b) Under coat application locations

# Under Coat

## BODY STRUCTURE



(a) Under coat application locations