

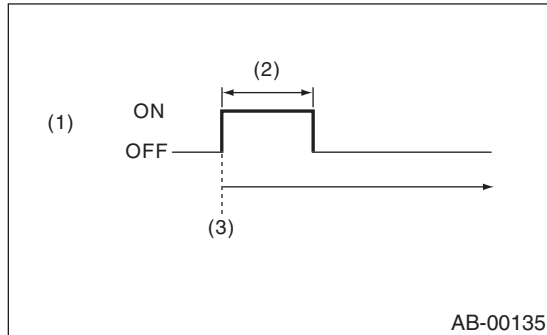
Airbag Warning Light Illumination Pattern

OCCUPANT DETECTION SYSTEM (DIAGNOSTICS)

11. Airbag Warning Light Illumination Pattern

A: INSPECTION

Turn the ignition switch to ON, and confirm that the airbag warning light remains on for approx. 6 seconds then turns off. (With ignition left ON)



- (1) Airbag warning light
- (2) Approx. 6 sec.
- (3) Ignition switch ON