

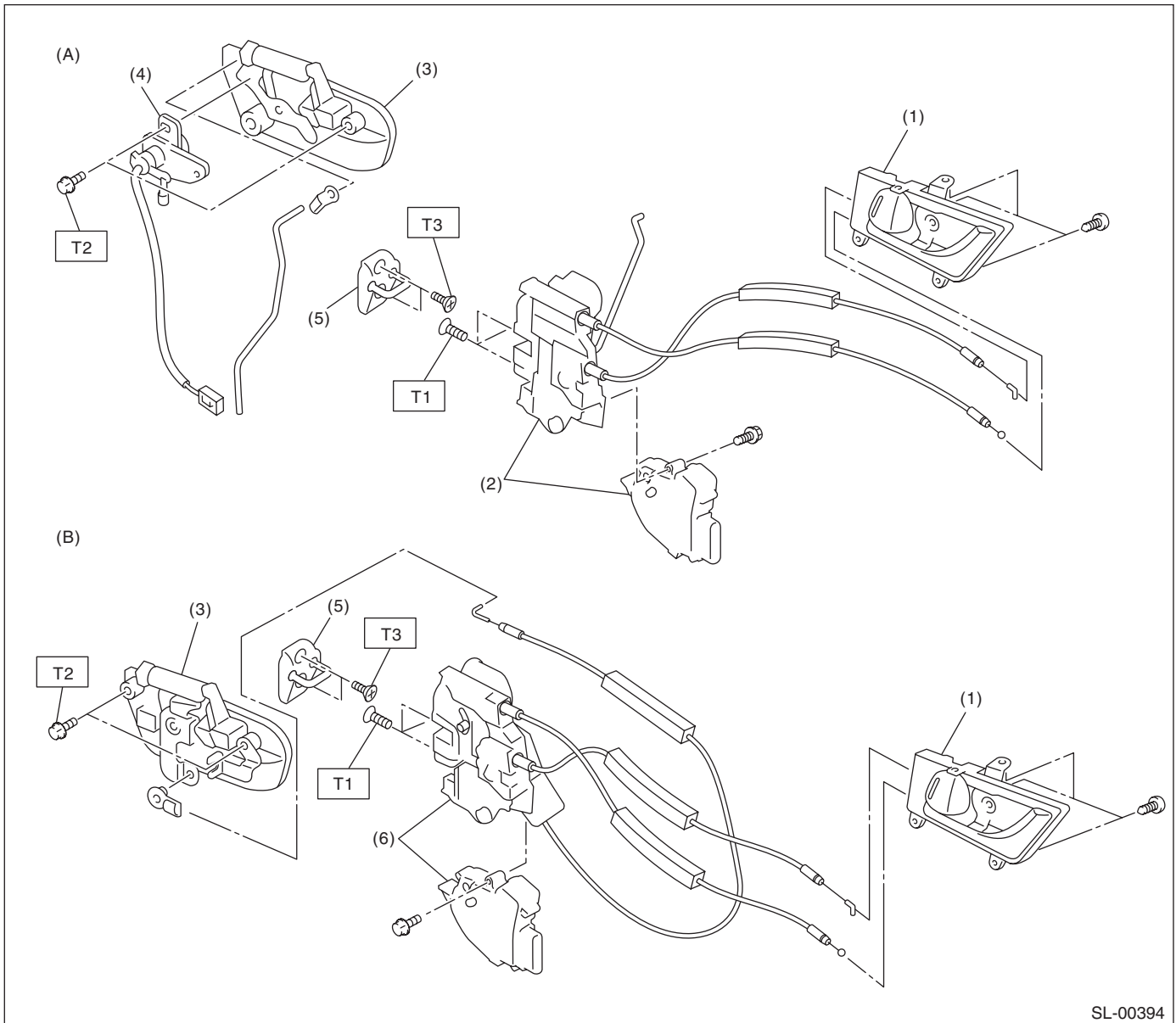
General Description

SECURITY AND LOCKS

1. General Description

A: COMPONENT

1. DOOR LOCK ASSEMBLY



SL-00394

(A) Front

(B) Rear

(1) Inner remote ASSY

(2) Front door latch and door lock actuator ASSY

(3) Door outer handle

(4) Key cylinder (switch)

(5) Striker

(6) Rear door latch and door lock actuator ASSY

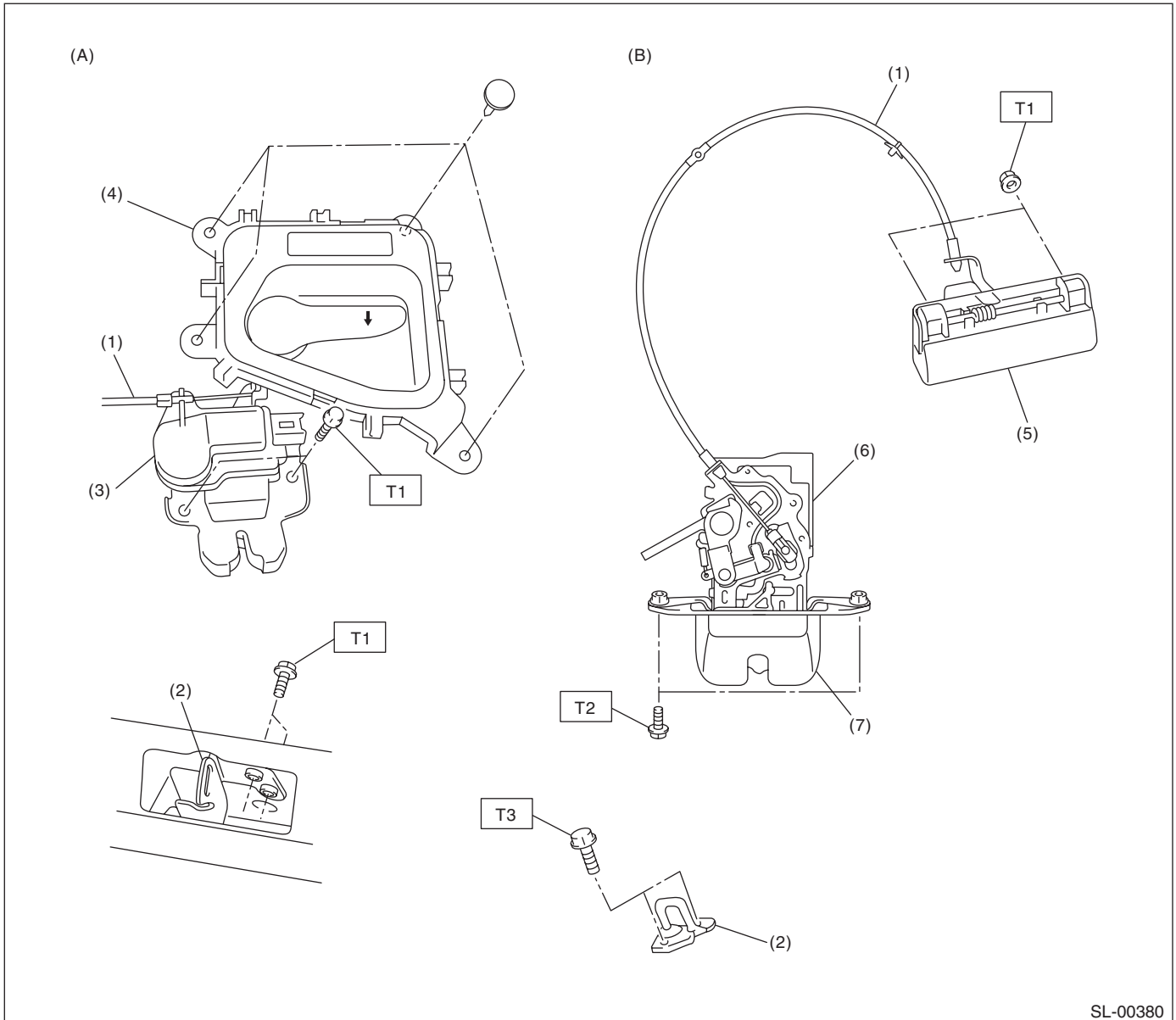
Tightening torque: N·m (kgf·m, ft·lb)

T1: 6.5 (0.66, 4.8)

T2: 7.5 (0.76, 5.5)

T3: 18 (1.8, 13.3)

2. TRUNK LID AND REAR GATE LOCK



SL-00380

(A) Trunk

(B) Rear Gate

- (1) Cable
- (2) Striker
- (3) Trunk lid lock ASSY
- (4) Trunk lid release handle

- (5) Rear gate outer handle
- (6) Rear gate actuator
- (7) Rear gate latch

Tightening torque: N-m (kgf-m, ft-lb)

T1: 7.5 (0.76, 5.5)

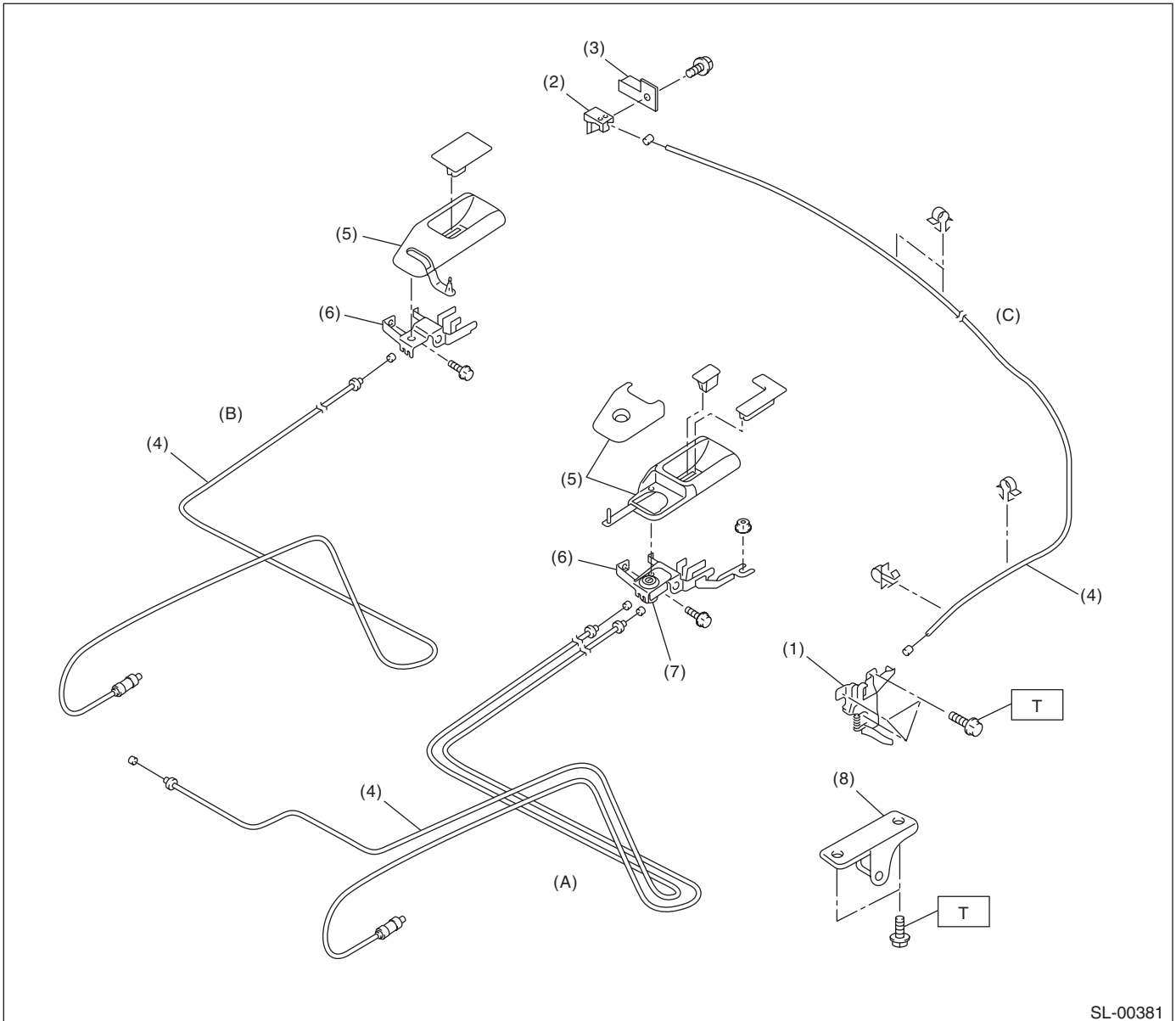
T2: 18 (1.8, 13.3)

T3: 25 (2.5, 18.4)

General Description

SECURITY AND LOCKS

3. FRONT HOOD LOCK AND REMOTE OPENERS



SL-00381

(A) Sedan model

(B) Wagon model

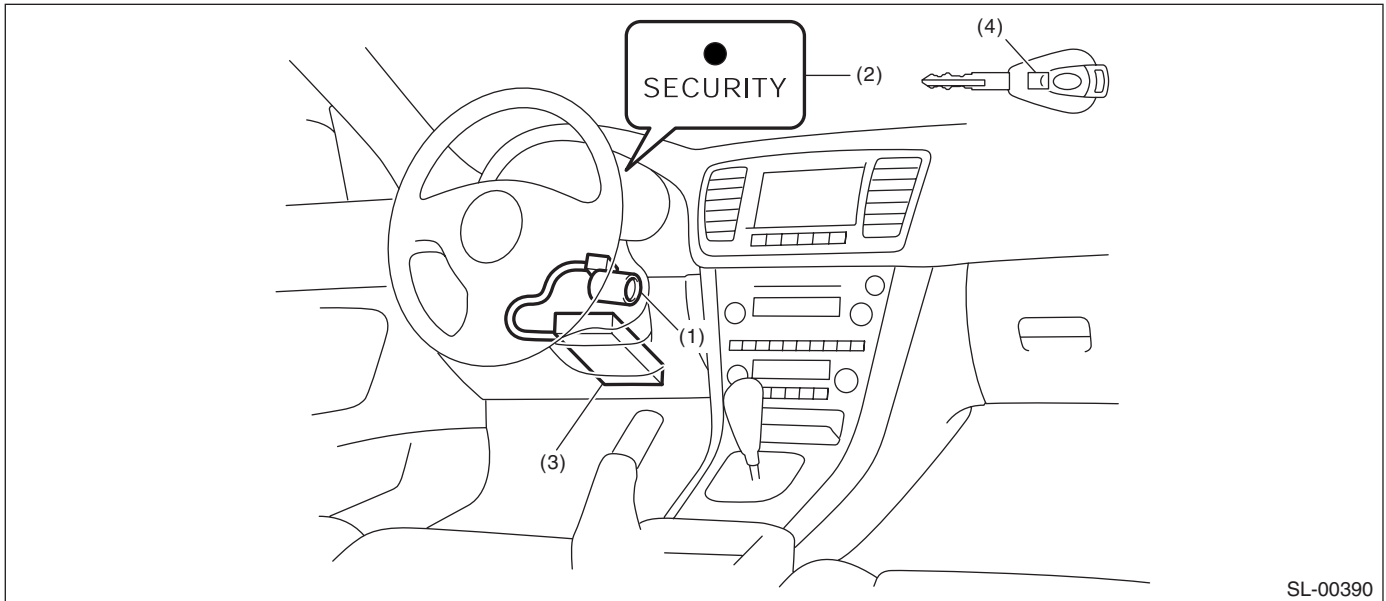
(C) Hood

- (1) Front hood lock ASSY
- (2) Lever ASSY
- (3) Lever ASSY bracket
- (4) Cable

- (5) Cover
- (6) Pull handle ASSY
- (7) Key cylinder
- (8) Striker

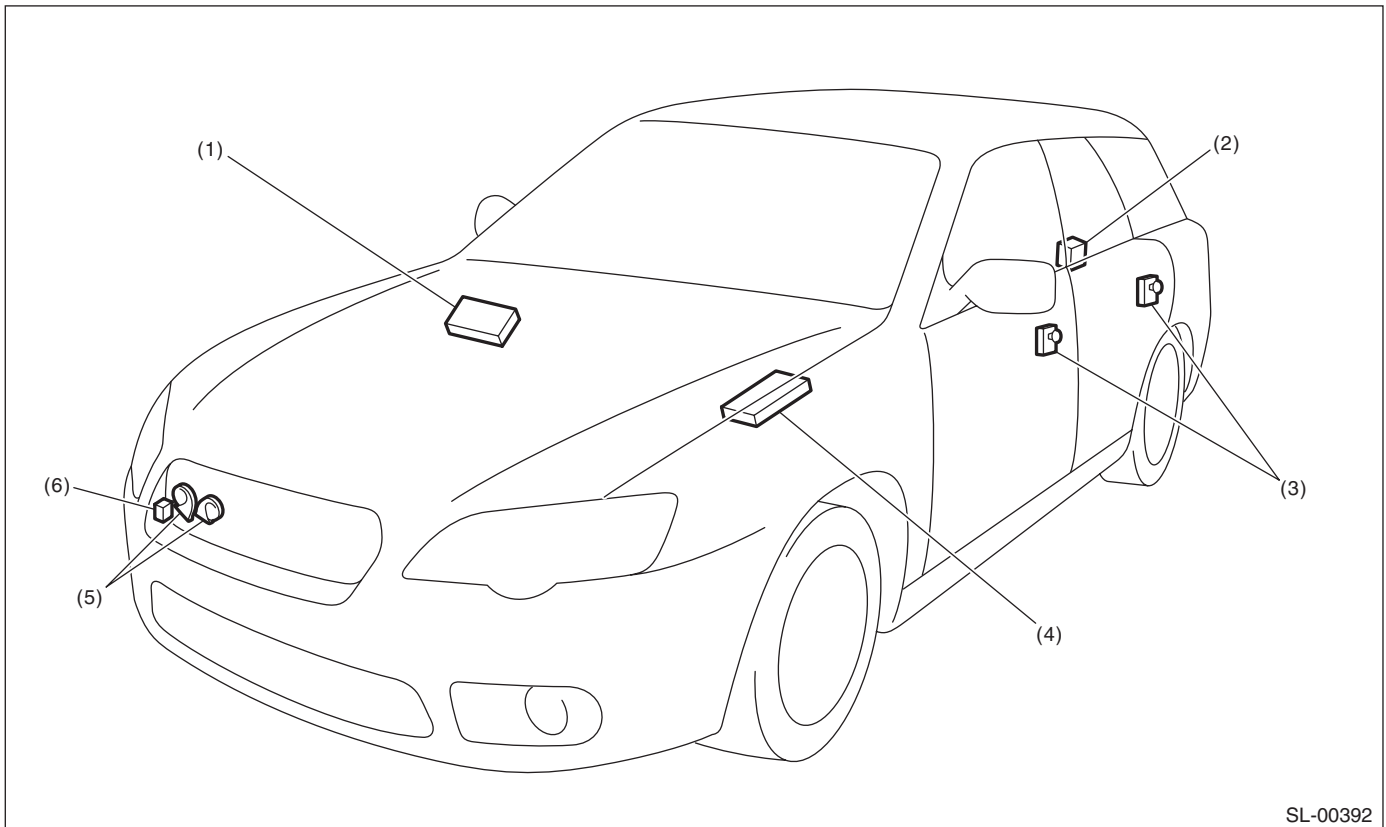
Tightening torque: N-m (kgf-m, ft-lb)
T: 33 (3.36, 24.2)

4. IMMOBILIZER SYSTEM



- (1) Antenna
- (2) Security indicator light (LED bulb)
- (3) Body integrated unit
- (4) Transponder

5. KEYLESS ENTRY SYSTEM



- (1) Keyless entry control module
- (2) Rear gate latch switch (Wagon model)
- (3) Door switch
- (4) Body integrated unit
- (5) Horn
- (6) Keyless buzzer

General Description

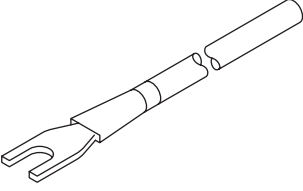
SECURITY AND LOCKS

B: CAUTION

- Before disassembling or reassembling parts, always disconnect the battery ground cable from battery. When repairing the audio, control module, etc. which are provided with memory functions, record the memory contents before disconnecting the ground cable from battery. Otherwise, these contents are erased upon disconnection.
- Reassemble the parts in the reverse order of disassembly unless otherwise indicated.
- Adjust the parts to the specifications described in this manual if so designated.
- Connect the connectors securely during reassembly.
- After reassembly, make sure all the functional parts operate smoothly.
- The airbag system wiring harness is routed near electrical parts and switches.
- Airbag system wiring harnesses and connectors are yellow. Do not use the electrical test equipment on these circuits.
- Be careful not to damage the airbag system wiring harness when servicing the ignition key cylinder.

C: PREPARATION TOOL

1. SPECIAL TOOL

| ILLUSTRATION | TOOL NUMBER | DESCRIPTION | REMARKS |
|---|-------------|-------------|-----------------------------|
|  ST-925580000 | 925580000 | PULLER | Used for removing trim clip |

2. GENERAL TOOL

| TOOL NAME | REMARKS |
|-------------------|---|
| Circuit tester | Used for measuring resistance and voltage. |
| Drill | Used for replacing ignition key lock. |
| Clip remover | Used for removing trim. |
| Clip clamp pliers | Used for removal of various clips and clamps. |