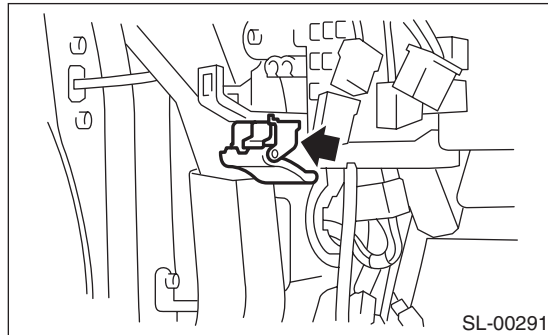


## 18. Remote Openers

### A: REMOVAL

#### 1. FRONT HOOD OPENER

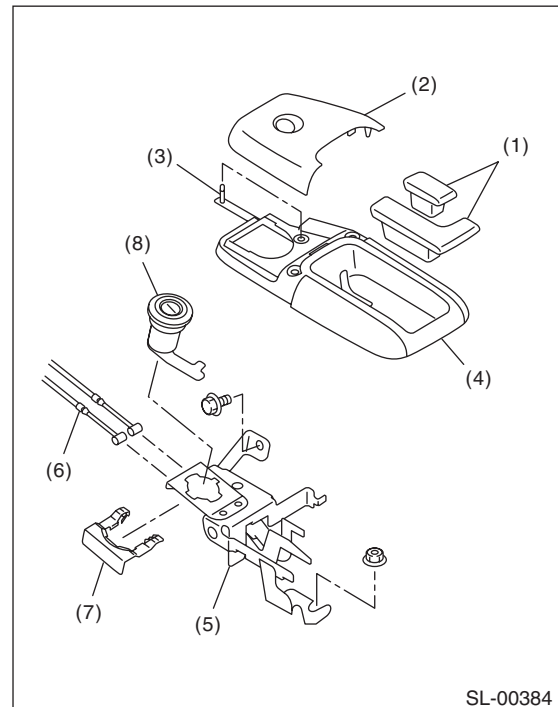
- 1) Remove the cable from the front hood lock.
- 2) Remove the bolt, and then detach the opener lever.



#### 2. TRUNK LID OPENER

- 1) Remove the rear seat. <Ref. to SE-17, REMOVAL, Rear Seat.>
- 2) Remove the center pillar lower trim, side sill cover, rear pillar lower trim and floor mat on the driver's side. Remove the clip holding the cable.
- 3) Remove the opener lever (1) and rear cover (2).
- 4) Remove the pin (3) and remove front cover (4).

- 5) Remove the bolt and nut, and remove the pull handle assembly (5).



- (1) Opener lever
- (2) Rear cover
- (3) Pin
- (4) Front cover
- (5) Pull handle ASSY
- (6) Cable
- (7) Clamp
- (8) Key cylinder

- 6) Remove the cable from the pull handle assembly (5).
- 7) Remove clamp (7) to remove the key cylinder (8).

**CAUTION:**

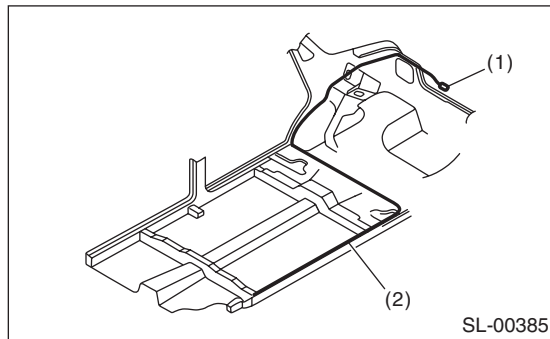
**Remove the key cylinder in the UNLOCK position.**

- 8) Remove the trunk lid lock assembly from the trunk lid.

# Remote Openers

## SECURITY AND LOCKS

9) Remove the cable from the trunk lid lock assembly.



- (1) Trunk lid lock ASSY
- (2) Cable

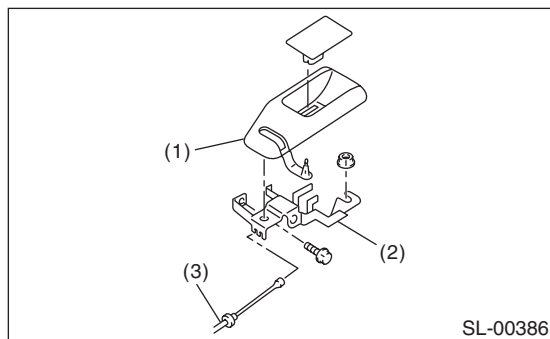
### 3. FUEL FILLER FLAP LID OPENER

#### Sedan

<Ref. to SL-47, TRUNK LID OPENER, REMOVAL, Remote Openers.>

#### Wagon

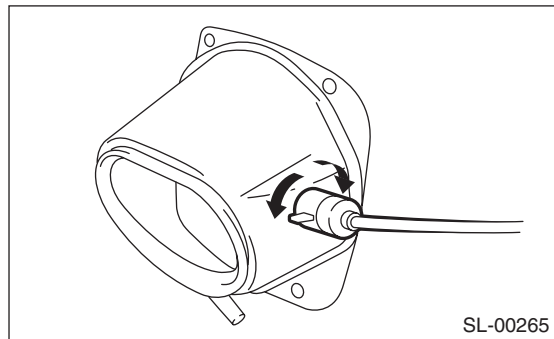
- 1) Remove the rear seat. <Ref. to SE-17, REMOVAL, Rear Seat.>
- 2) Remove the center pillar lower trim, side sill cover, rear pillar lower trim and floor mat on the driver's side. Remove the clip holding the cable.
- 3) Remove the bolt and nut, and then detach the pull handle assembly.



- (1) Cover
- (2) Pull handle ASSY
- (3) Cable

- 4) Remove the cable from pull handle assembly.
- 5) Remove the rear quarter trim RH. <Ref. to EI-61, REMOVAL, Rear Quarter Trim.>

6) Rotate the fuel lock inside the quarter panel to 90° and remove. (Either right or left turn)



### B: INSTALLATION

Install in the reverse order of removal.

#### CAUTION:

Install the key cylinder to the trunk lid in the UNLOCK position.

### C: INSPECTION

Make sure the front hood, trunk lid and fuel filler flap lid open and close smoothly.