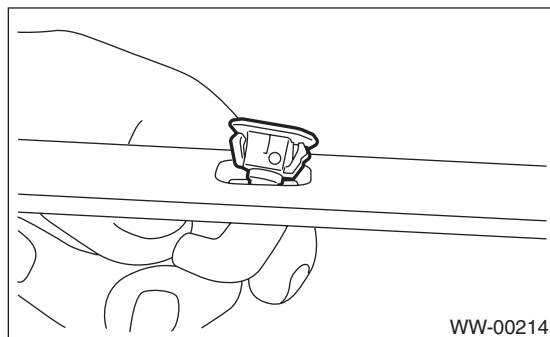


11.Rear Washer

A: REMOVAL

- 1) Detach the roof spoiler. <Ref. to EI-40, REMOVAL, Roof Spoiler.>
- 2) Remove the washer hose from washer nozzle.
- 3) Push the claw of the nozzle from the reverse side of roof spoiler with a flat tip screwdriver or equivalent, and remove the washer nozzle.



B: INSTALLATION

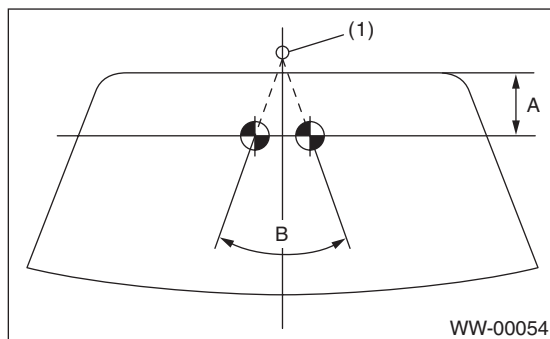
Install in the reverse order of removal.

C: INSPECTION

- Make sure the nozzle and hose are not clogged.
- Make sure the hose is not bent.
- While the vehicle is at a standstill, make sure that the washer injection position is as shown in the figure.

NOTE:

Washer injection position can not be adjusted.



- (1) Nozzle
- (A) 70 mm (2.76 in)
- (B) 70°

Rear Washer

WIPER AND WASHER SYSTEMS

ENTERTAINMENT

ET

	Page
1. General Description	2
2. Audio System	3
3. Front Accessory Power Supply Socket System	4
4. Rear Accessory Power Supply Socket System	5
5. Navigation System	6
6. Audio	8
7. Front Speaker	9
8. Tweeter	10
9. Rear Speaker	11
10. Woofer	12
11. Antenna	13
12. Antenna Amplifier	14
13. Noise Suppressor	15
14. Navigation Display	16
15. GPS Antenna	17
16. Navigation Body	18
17. Front Accessory Power Supply Socket	19
18. Rear Accessory Power Supply Socket	20
19. Steering Satellite Switch	21